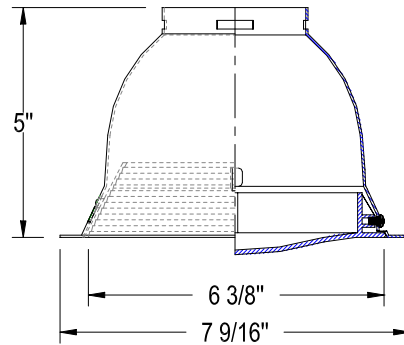


CATALOG NUMBER	TYPE
PROJECT	

6" PREMIUM DOWNLIGHT TRIM **R6VT-59**



Ordering Matrix		
Series	Model Number	Finish
R6VT	59	WT

Ordering Example (series – model number – finish): R6VT-59-WT

Product Details	Specification Features
<p>Application: Wall wash down light trim, 1-inch maximum ceiling thickness. Provides smooth wash of illumination with minimal glare. Used with incandescent or fluorescent lamp housings.</p> <p>Materials: One-piece spun aluminum construction. Integral trim ring is painted white, baffle is painted aluminum. Trim is retained to socket via spring clips.</p> <p>Finish: WT = White baffle with White trim</p> <p>Ratings: UL & CUL listed.</p>	<ul style="list-style-type: none"> Suitable for damp locations 5 year WAC Lighting product warranty.

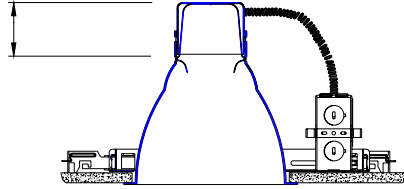
Compatible Housings (sold separately)					
R6VI-B-ICA Insulation Contact & Air Tight New Construction Incandescent Lamp: PAR30 50W		R6VF-113Q* Non IC Frame-in Style New Construction Fluorescent Lamp: Quad 13W G24Q-1		R6VF-126/32T* Non IC Frame-in Style New Construction Fluorescent Lamp: Tri-Tube 26/32W GX24Q-3	
R6VI Non IC Frame-in Style New Construction Incandescent Lamp: A21 100W		R6VI-R-ICA Insulation Contact & Air Tight Remodeling Incandescent Lamp: PAR30 50W		R6VI-ICA Insulation Contact & Air Tight New Construction Incandescent Lamp: PAR30 50W	

*Housing available in emergency version. Specify "EM" as suffix.

CATALOG NUMBER	TYPE
PROJECT	

6" PREMIUM DOWNLIGHT TRIM

R6VT-59



Socket cup adds a maximum of 2 1/8" to the height of the trim when used with frame in kits.