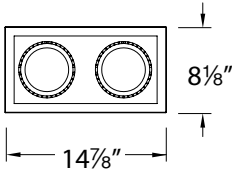


MT-230MH

2 Light PAR30 Metal Halide Multiple Spot

WAC LIGHTING

Responsible Lighting®



Fixture Type:

Catalog Number:

Project: _____

Location: _____

PRODUCT DESCRIPTION

Square double light gimbal ring style adjustable recessed fixture. Housing and trim ordered separately.

FEATURES

- Integrates high output, excellent light quality and superb energy efficiency in a compact package equal in size to an MR16 halogen
- Provides improved discharge arc offering excellent color stability and color rendering
- Best choice for retail applications where there is minimal on/off operation
- A 1/4" low profile
- The supplied clear glass lens can be replaced by a variety of lenses or accessories
- 25° vertical adjustment and 350° horizontal rotation
- 20W, 39W or 70W lamping
- 5 year WAC Lighting product warranty

SPECIFICATIONS

Construction: Stamped metal trim and aluminum housing. Frame, junction box and hanger bars are heavy gauge galvanized steel.

J-Box: Seven knockouts and four Romex® style wiring connectors provided for ease of installation. Rated for branch and chain wiring.

Ballast: Pulse start electronic ballast, 120V/277AC input. Thermal protection provided to prevent against overheating and misuse of insulation near fixture.

Light Source: Utilizes one 20W, 39W or 70W PAR30L metal halide lamp. Lamp sold separately.

Mounting: Supplied with hanger bars, adjustable from 15"-24 1/2" to accommodate various joist construction and grid sizes. Accommodates surface of 1/2" to 1" thick. 7 3/16" x 13 5/16" cutout.

Finish: White Trim/Black Interior (WT/BK) and White Trim/White Interior (WT/WT).

Rating: Non-IC: Insulation must be kept at least 3" away from housing.

Standards: UL & CUL Listed. Suitable for damp locations.

TRIM ORDER NUMBER

Model #	Finish - Trim/Interior
MT-230	WT/BK White/Black
	WT/WT White/White

FINISHES



HOUSING ORDER NUMBER

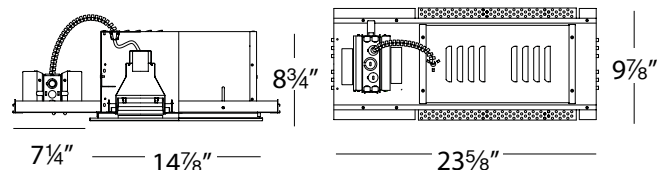
Model #	Watt
MT-230MH	20 20W
	39 39W
	70 70W

MT-230 -

Example: **MT-230-WT/WT**

MT-230MH -

Example: **MT-230MH-39**



WAC Lighting
www.waclighting.com
Phone (800) 526.2588 • Fax (800) 526.2585

Headquarters/Eastern Distribution Center
44 Harbor Park Drive • Port Washington, NY 11050
Phone (516) 515.5000 • Fax (516) 515.5050

Western Distribution Center
1750 Archibald Avenue • Ontario, CA 91760
Phone (800) 526.2588 • Fax (800) 526.2585