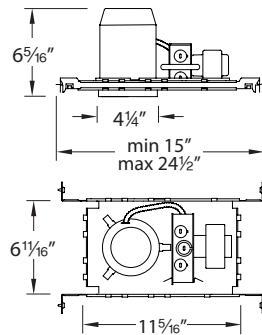
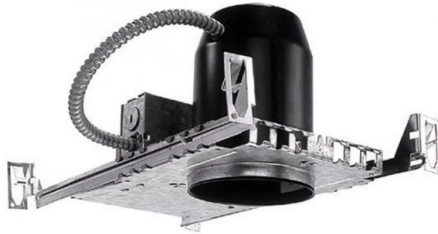


HR-8402HL

4" Low Voltage New Construction Housing
120V –Non-IC – Magnetic – High Output

WAC LIGHTING
Responsible Lighting®



Fixture Type:

Catalog Number:

Project:

Location:

PRODUCT DESCRIPTION

120V input, non-IC new construction housing with magnetic transformer. For use with 4" trims.

FEATURES

- Cutout: 4 $\frac{3}{8}$ "
- Integral magnetic transformer
- May be dimmed with magnetic low voltage (MLV) dimmer
- J-Box and transformer accessible through ceiling
- Proven core and coil technology
- Supplied thermal protector protects against over-lamping
- Suitable for 2 x 8 joist installations, for use in "shallow" applications
- 5 year WAC Lighting product warranty

SPECIFICATIONS

Construction: Housing is 20 gauge steel, painted black. Frame, junction box and hanger bars are heavy gauge galvanized steel. Ceramic bi-pin socket, 18 gauge teflon insulated wires with fiberglass sleeves.

J-Box: Seven knockouts and four Romex® style wiring connectors provided for ease of installation. Rated for branch and chain wiring.

Transformer: Magnetic, 120VAC 50/60Hz input, 12V/75W max output. Long-life transformer with proven core and coil technology. Compatible with SORAA MR16 LED.

Lamp: Utilizes 12V/75W max MR16 lamps (order separately).

Mounting: Supplied with hanger bars, adjustable from 15"-24 $\frac{1}{2}$ " to accommodate various joist construction and grid sizes. Hanger bars have nailers for wood joists as well as slots for easy mounting on "T" bars. Accommodates surface up to $\frac{3}{4}$ " thick. 4 $\frac{3}{8}$ " cutout hole.

Dimming: May be dimmed with magnetic low voltage (MLV) dimmer.

Rating: Non-IC: insulation must be kept at least 3" away from the housing.

Standards: UL & CUL Listed, Suitable for damp locations.

ORDER NUMBER

HR-8402HL

REPLACEMENT TRANSFORMER

Model #	Input Volt
HR-8002L	120V

COMPATIBLE TRIMS

Model #	Description	Finish – (where there is a slash (/) the letters correspond as: interior finish/exterior finish)
HR-D411	Round, step baffle, 35° adjustable	White/White (WT/WT)
HR-D412	Round, open reflector, 35° adjustable	Specular Clear/Brushed Nickel (BN), Specular Clear/White (CL)
HR-D412-S	Square, open reflector, 35° adjustable	Specular Clear/Brushed Nickel (SC/BN), Specular Clear/White (SC/WT)
HR-D413	Round, slotted trim, 35° adjustable	White (WT)
HR-D416	Square, directional spot, 30° adjustable	Black (BK), Brushed Nickel (BN), White (WT)
HR-D417	Round, gimbal ring, 25° adjustable	Black (BK), Brushed Nickel (BN), White (WT)
HR-D425	Round, directional spot, 80° adjustable	Black (BK), Brushed Nickel (BN), White (WT)
HR-8411	Round, step baffle, 35° adjustable	Brushed Nickel (BN), Copper Bronze (CB), White (WT), White/White (WT/WT)
HR-8412	Round, open reflector, 35° adjustable	Brushed Nickel (BN), Clear (CL)
HR 8414	Round, eyeball, 35° adjustable	White (WT), White/White (WT/WT)
HR-8417	Round, gimbal ring, 25° adjustable	Black (BK), Brushed Nickel (BN), Copper Bronze (CB), White (WT)

See individual trim spec sheets for complete information.

WAC Lighting

www.waclighting.com

Phone (800) 526.2588 • Fax (800) 526.2585

Headquarters/Eastern Distribution Center

44 Harbor Park Drive • Port Washington, NY 11050

Phone (516) 515.5000 • Fax (516) 515.5050

Western Distribution Center

1750 Archibald Avenue • Ontario, CA 91760

Phone (800) 526.2588 • Fax (800) 526.2585