

## INSTALLATION INSTRUCTION

### Genesis, Quest and Uber LEDme® Pendants

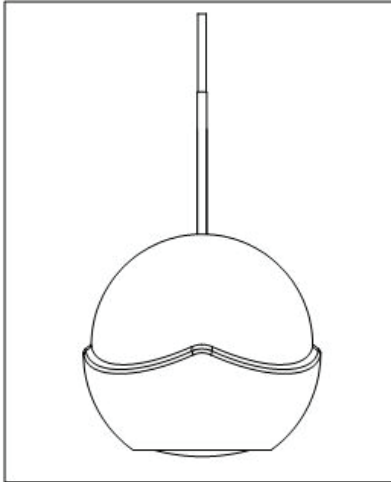
QP-LED311, QP-LED314, QP-LED315

# WAC LIGHTING

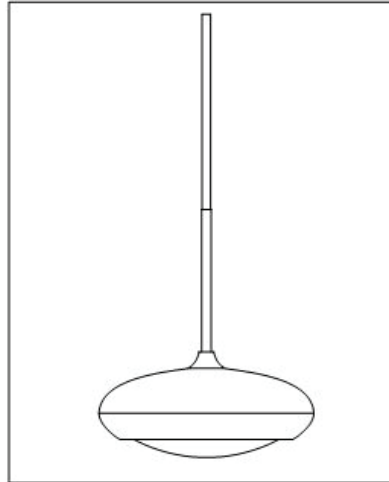
Responsible Lighting®

#### INSTRUCTIONS PERTAINING TO A RISK OF FIRE, OR INJURY.

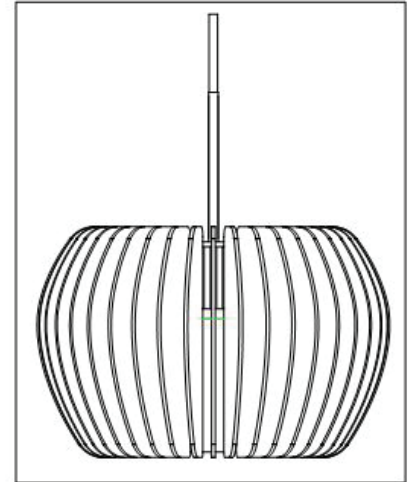
Save these instructions.



**GENESIS**  
QP-LED311



**QUEST**  
QP-LED314



**ÜBER**  
QP-LED315

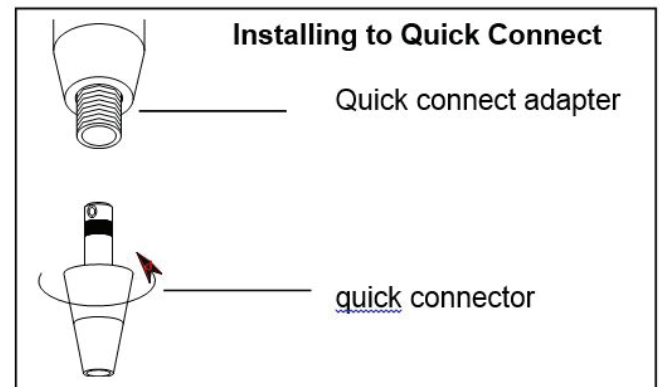
#### OVERVIEW:

Pendant sockets sets are designed for use with all WAC quick connect adapters. They may also be used on other manufacturers brand of quick connect (consult factory for compatibility). Pendants may be mounted to mono rail, monopoints, or line volt track, by coupling to a low voltage quick connect adapter. Sockets are supplied with a 6' cable and may be field cut to desired length.

#### INSTALLING PENDANT TO QUICK CONNECT:

1. Insert the post of the quick connect into the quick connect adapter.
2. Thread the top half of the conical section until it seats with the adapter.
3. Adjust fixture position, use caution not to loosen the conical section.

See reverse for field shortening pendants.



WAC Lighting  
www.waclighting.com  
Phone (800) 526.2588 • Fax (800) 526.2585

Headquarters/Eastern Distribution Center  
44 Harbor Park Drive • Port Washington, NY 11050  
Phone (516) 515.5000 • Fax (516) 515.5050

Western Distribution Center  
1750 Archibald Ave • Ontario, CA 91761  
Phone (800) 526.2588 • Fax (800) 526.2585

## INSTALLATION INSTRUCTION

### Genesis, Quest and Uber LEDme® Pendants

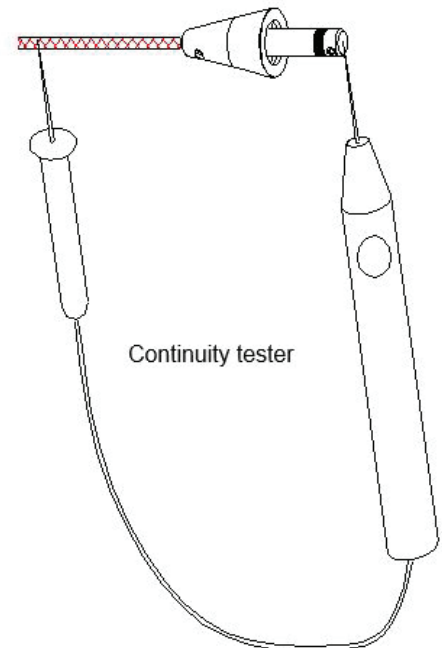
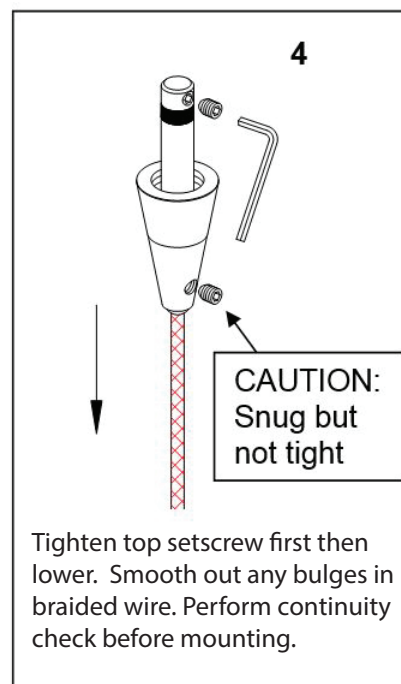
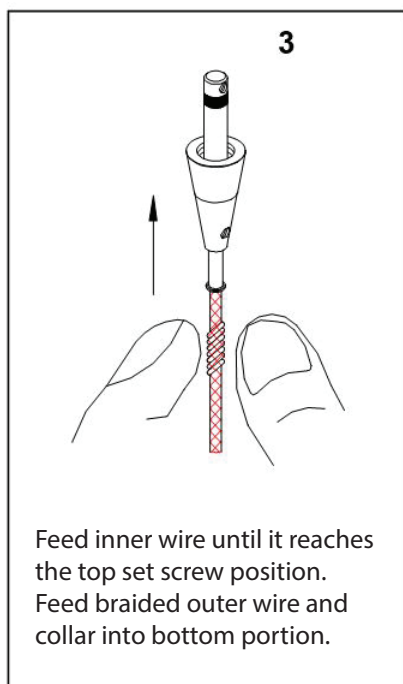
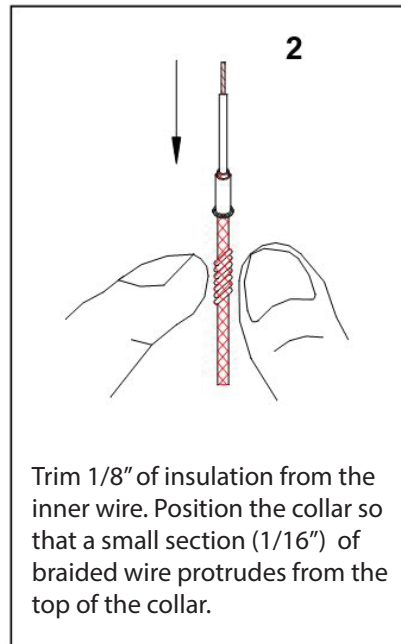
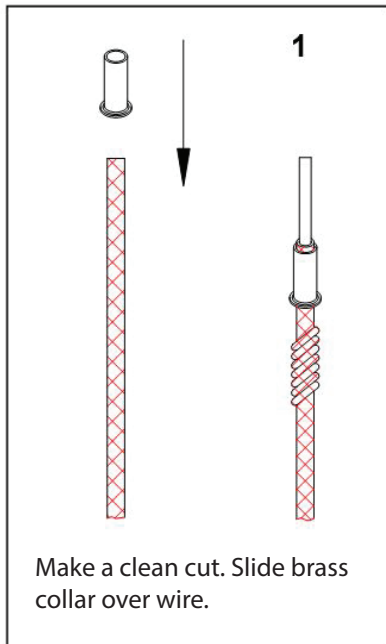
QP-LED311, QP-LED314, QP-LED315

# WAC LIGHTING

Responsible Lighting®

#### TO INSTALL / SHORTEN THE CABLE:

All Pendant shades use the quick connect adapter to attach to the rail. On the QP-601 the mating piece (top conical section) for quick connect adapter comes uninstalled. Feed the cable end through the glass shade and the metal finial. If cable needs to be shortened, make the cut now. To install the top conical section, follow the step-by-step instructions below. **NOTE: PENDANT CABLES ARE CO-AXIAL, IF THE LOWER SCREW IN STEP 4 IS MADE TOO TIGHT, THE INNER AN OUTER WIRE WILL SHORT. A SHORT CIRCUIT WILL RENDER THE ENTIRE SYSTEM IN-OPERATIVE AND POSSIBLY DAMAGE THE TRANSFORMER. CHECK ALL PENDANT SPLICES FOR CONTINUITY BEFORE INSTALLING.**



#### CHECK SPLICE:

Before mounting, with lamp removed from the socket, check for continuity. There should be none.

Insert lamp in socket and re-check. There should now be continuity, indicating a completed circuit.

Install with power off.

WAC Lighting  
www.waclighting.com  
Phone (800) 526.2588 • Fax (800) 526.2585

Headquarters/Eastern Distribution Center  
44 Harbor Park Drive • Port Washington, NY 11050  
Phone (516) 515.5000 • Fax (516) 515.5050

Western Distribution Center  
1750 Archibald Ave • Ontario, CA 91761  
Phone (800) 526.2588 • Fax (800) 526.2585