

# INSTALLATION INSTRUCTION

## 600 Series Quick Connect™ Socket Set

QP-601

WAC LIGHTING  
Responsible Lighting®

### INSTRUCTIONS PERTAINING TO A RISK OF FIRE, OR INJURY

Lighted lamp is HOT!

#### SAFETY INSTRUCTION

To reduce the risk of FIRE OR INJURY:

- Turn off all power and allow to cool before replacing lamp.
- Lamp gets HOT quickly! Contact only switch/plug when turning on.
- Do not touch lens, guard, or enclosure.
- Keep away from materials that may burn.
- Do not touch the lamp at any time. Use a soft cloth.
- Oil from skin may damage lamp.
- Do not operate the luminaire with a missing lens or damaged shield.
- Save these instructions.

#### OVERVIEW

Pendant sockets sets are designed for use with all WAC Quick Connect™ adapters. They may also be used on other manufacturers brand of quick connect (consult factory for compatibility). Pendants may be mounted to monorail, mono/multi points, or line volt track, by coupling to a low voltage quick connect adapter. Sockets are supplied with a 6' cable and may be field cut to desired length.

#### INSTALLING LAMP & SHADE:

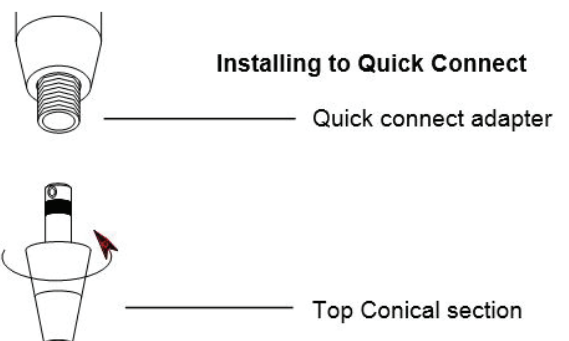
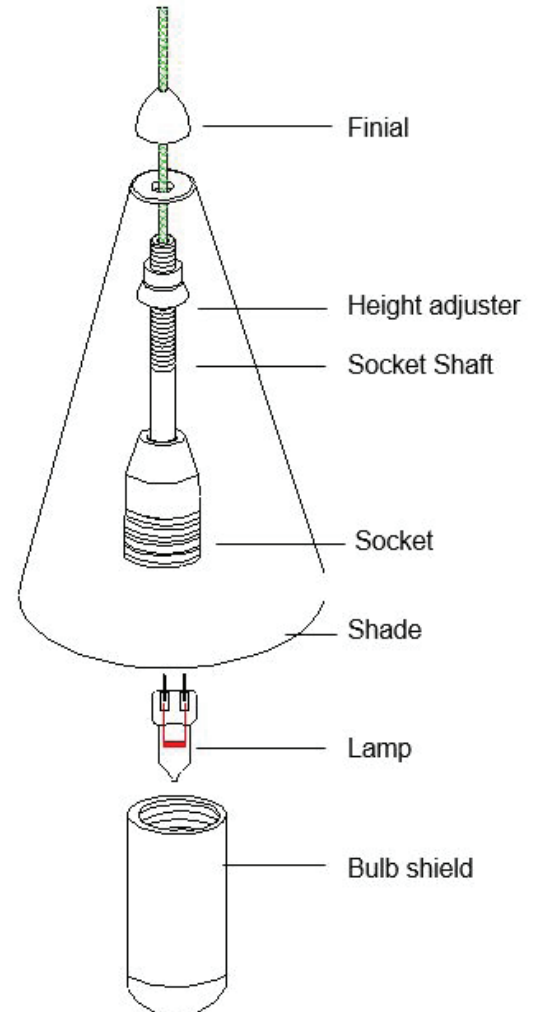
1. It is necessary to remove the adapter from the top of the cable. Follow detailed instructions for removal (steps 1 & 2) on the reverse side of this page. If you intend to shorten the pendant proceed to steps 3 & 4.
2. Once the adapter is removed, pass it through the hole in the shade. The socket shaft will seat against the inside of the shade. It has a threaded collar to allow adjustment for variations in shade thickness.
3. Screw the finial to the socket shaft so it is snug, but not tight to the shade.
4. Return to the top end of the cable and re-install the adapter following steps 5, 6, & 7. Insert the lamp into the fixture by aligning the pins with the socket holes, and gently pushing until lamp seats.
5. Use 12V 50W bi-pin Halogen lamp with G6.35 base (supplied) with 12V, 50-watt Halogen) (24V lamp may be used depending on power supply).
6. Screw bulb shield on to the socket.

Installing Pendant to Quick Connect:

1. Insert the post of the quick connect into the quick connect adapter.
2. Thread the top half of the conical section until it seats with the adapter.

See p.2 for field shortening pendants.

#### INSTALLING LAMP & SHADE



WAC Lighting  
www.waclighting.com  
Phone (800) 526.2588 • Fax (800) 526.2585

Headquarters/Eastern Distribution Center  
44 Harbor Park Drive • Port Washington, NY 11050  
Phone (516) 515.5000 • Fax (516) 515.5050

Western Distribution Center  
1750 Archibald Ave • Ontario, CA 91761  
Phone (800) 526.2588 • Fax (800) 526.2585

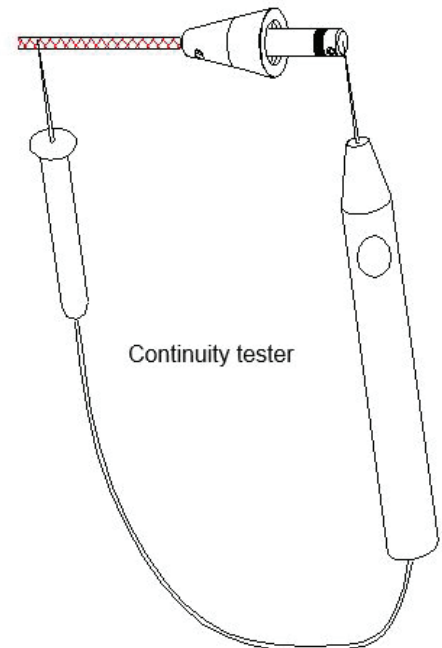
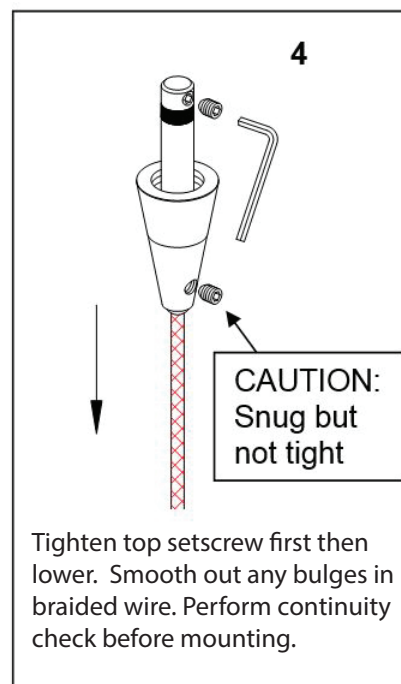
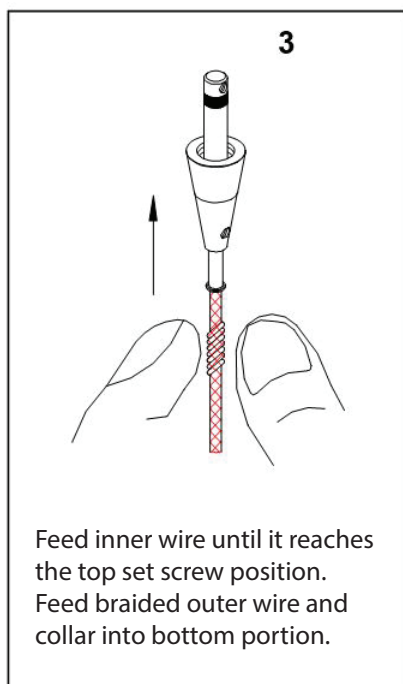
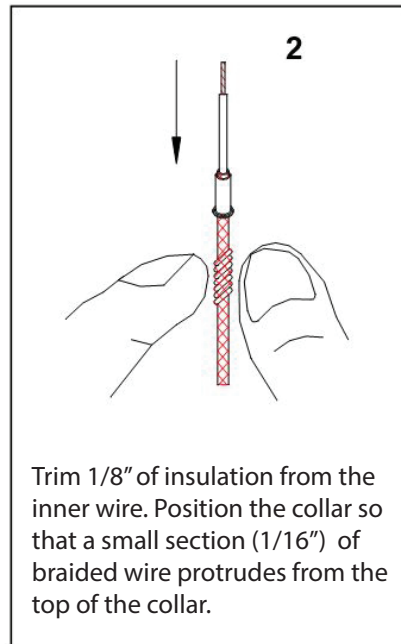
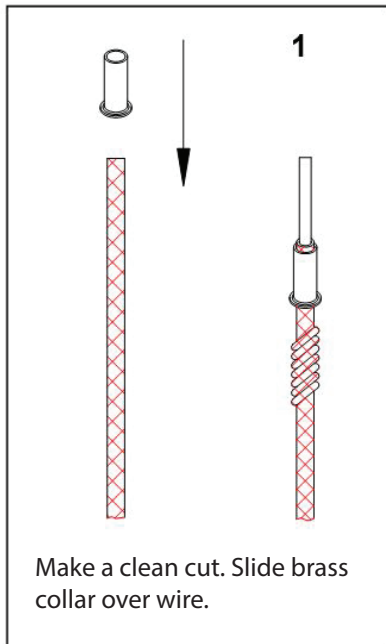
INSTALLATION INSTRUCTION  
**600 Series Quick Connect™ Socket Set**  
QP-601

WAC LIGHTING  
Responsible Lighting®

**TO INSTALL/ SHORTEN PENDANT:**

All Pendant shades use the quick connect adapter to attach to the rail. On the QP-601 the mating piece (top conical section) for quick connect adapter comes uninstalled. Feed the cable end through the glass shade and the metal finial. If cable needs to be shortened, make the cut now. To install the top conical section, follow the step-by-step instructions below.

**NOTE: PENDANT CABLES ARE CO-AXIAL, IF THE LOWER SCREW IN STEP 4 IS MADE TOO TIGHT, THE INNER AN OUTER WIRE WILL SHORT. A SHORT CIRCUIT WILL RENDER THE ENTIRE SYSTEM IN-OPERATIVE AND POSSIBLY DAMAGE THE TRANSFORMER. CHECK ALL PENDANT SPLICES FOR CONTINUITY BEFORE INSTALLING.**



**CHECK SPLICE:**

Before mounting, with lamp removed from the socket, check for continuity. There should be none.

Insert lamp in socket and re-check. There should now be continuity, indicating a completed circuit.

Install with power off.

WAC Lighting  
www.waclighting.com  
Phone (800) 526.2588 • Fax (800) 526.2585

Headquarters/Eastern Distribution Center  
44 Harbor Park Drive • Port Washington, NY 11050  
Phone (516) 515.5000 • Fax (516) 515.5050

Western Distribution Center  
1750 Archibald Ave • Ontario, CA 91761  
Phone (800) 526.2588 • Fax (800) 526.2585