

INSTALLATION INSTRUCTION

Quick Adjust™ Pendant Canopy

MP-60E

WAC LIGHTING
Responsible Lighting®

SAFETY INSTRUCTION

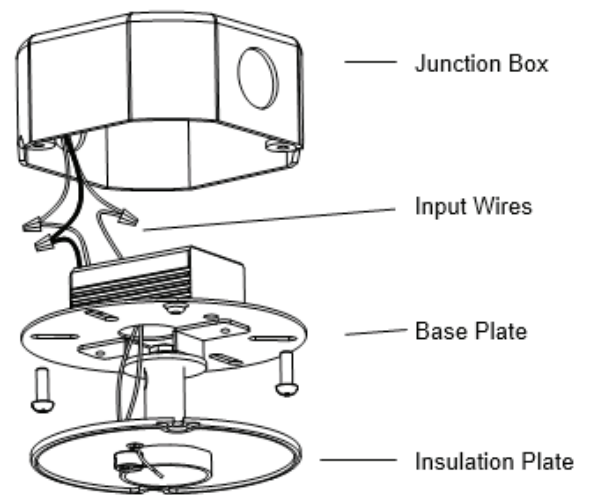
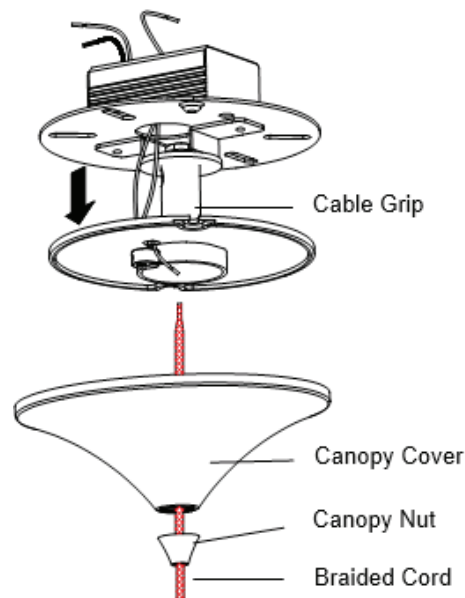
- Do not conceal or extend exposed conductors through a building wall.
- Do not install this system in wet locations.
- To reduce the risk of fire and burns, do not install this lighting system where the exposed bare conductors can be shorted or contact any conductive materials.
- Make sure all connections are tight.
- Do not install any luminaire closer than 6 inches from any curtain, or similar combustible materials.
- Turn off electrical power before modifying the lighting system in any way.
- Install over a standard 4 inch junction box.

OVERVIEW

MP-60E canopy designed to fit all WAC Pendants. Uses a 50 watt max halogen lamp.

The pendant weight should be no more than 5 pounds. MP-60E canopy comes with a self-contained electronic transformer that may be dimmed with an electronic low voltage dimmer switch.

1. Unscrew "canopy nut" and remove "canopy cover" from the threaded cable grip.
2. Pull down the "insulation plate".
3. Support canopy and guide the black and white wires from the transformer into the junction box.
4. Connect ground wire from junction box to the green grounding wire from the base plate.
5. Connect corresponding line volt wires from the junction box to transformer wires (white wire connect to white wire and black wire connect to black wire), with wire nuts (supplied). Tuck excess wire into the junction box.
6. Attach the "base plate" to the junction box using the slotted holes and screws.
7. Re-attach "insulation plate".



WAC Lighting
www.waclighting.com
Phone (800) 526.2588 • Fax (800) 526.2585

Headquarters/Eastern Distribution Center
44 Harbor Park Drive • Port Washington, NY 11050
Phone (516) 515.5000 • Fax (516) 515.5050

Western Distribution Center
1750 Archibald Ave • Ontario, CA 91761
Phone (800) 526.2588 • Fax (800) 526.2585

INSTALLATION INSTRUCTION

Quick Adjust™ Pendant Canopy

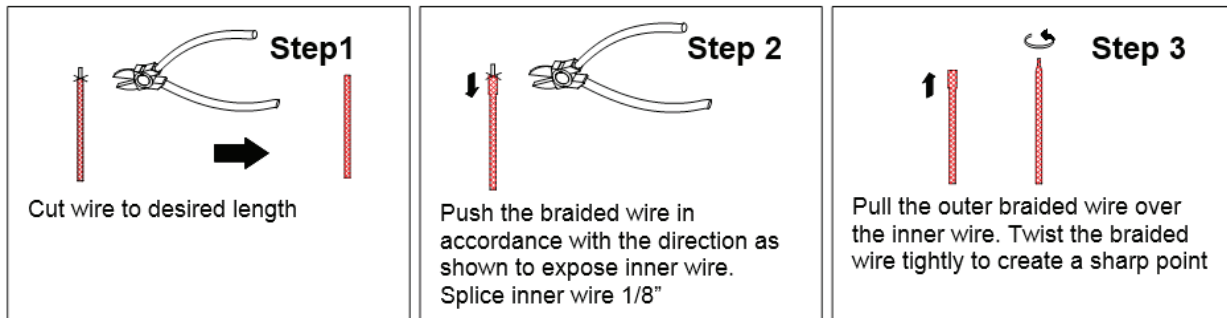
MP-60E

WAC LIGHTING

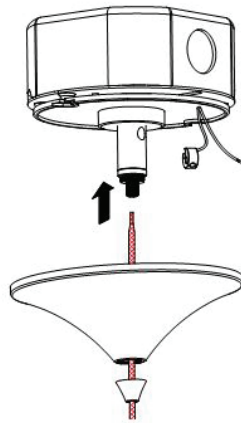
Responsible Lighting®

PENDANT INSTALLATION

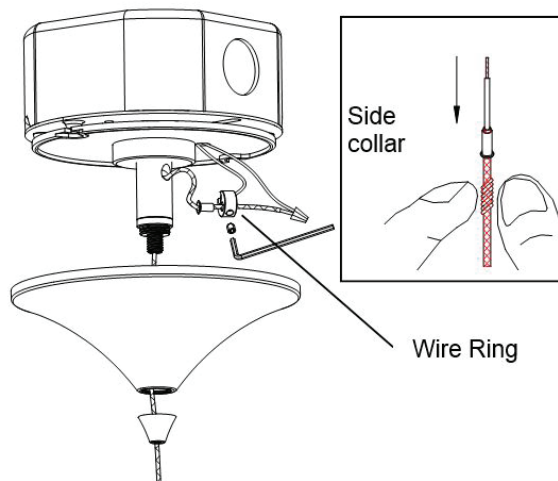
1. Make the desired cut of the "braided cord" for proper mounting height. Trim 1/8" of insulation from the inner wire.



2. Feed the "braided cord" through "canopy nut" and "canopy cover". Push up the "cable grip" top and feed the braided cord until 3" braided cord comes out from side hole.



3. Position the "side collar" (supplied) so that a small section (1/16") of "braided cord" protrudes from the top of the collar.
4. Feed the "braided cord" and "side collar" into the end of the "wire ring" and tighten the set screw with allen wrench (supplied).
5. Use wire nuts (supplied) to connect the protruding braid cord to the wire coming from the transformer.
6. Raise the "canopy cover" and make sure that wires are contained in the "canopy cover".
7. Tighten "canopy nut".



WAC Lighting
www.waclighting.com
Phone (800) 526.2588 • Fax (800) 526.2585

Headquarters/Eastern Distribution Center
44 Harbor Park Drive • Port Washington, NY 11050
Phone (516) 515.5000 • Fax (516) 515.5050

Western Distribution Center
1750 Archibald Ave • Ontario, CA 91761
Phone (800) 526.2588 • Fax (800) 526.2585