

# INSTRUCTIONS: T5 Fluorescent Bar Light BA-FT08-WT, BA-FT13-WT, BA-FT21-WT, BA-FT28-WT AND BA-FT35-WT

## CAUTION:

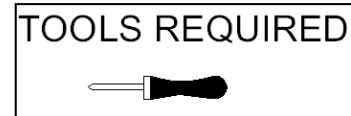
- Read all instructions before installing.
- Turn off power at main switch prior to installation to prevent electrical shock.
- For display or under cabinet only. Not intended for ceiling use.
- System is intended for installation in accordance with National Electric Code, and local regulations. Consult with local inspector to assure compliance.
- Keep away from combustible materials such as plastic or paper products.
- Do not touch cover when light is on. Do not operate with missing or damaged lens.
- Retain instructions for future reference.

## NOTE:

- 1) Do not discard any of the packaging until you are sure that you have all of the parts and the fittings.
- 2) To prevent damage during shipping, some panels have been secured with glue-tac. Rub glue-tac with fingers to remove.
- 4) If the external flexible cord of this luminaire is damaged, it should be replaced by a cord of similar type available from the manufacturer or from specialized dealers.
- 6) The interlink between lights is by a 2 pin plug. All connections are factory fitted and we do not recommend that any modifications or changes are made to the designed product.
- 7) Regarding the max. linking quantity, please refer to the printing on the bottom of the fixture.
- 8) Please do not connect the output terminal to the power supply.

PARTS CHECK LIST		
CODE	DESCRIPTION	QTY
A	LIGHT	1
B	6' POWER CORD	1
C	ACCESSORIES	1
D	INSTRUCTION	1

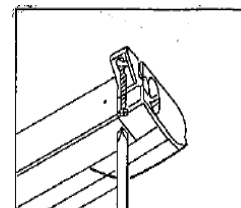
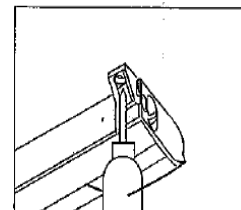
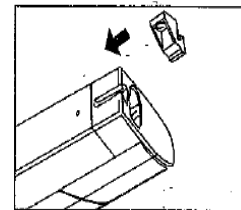
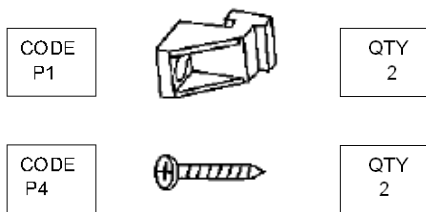
FITTINGS CHECK LIST		
CODE	DESCRIPTION	QTY
P1	Fixing Bracket(Horizontal)	2
P2	Fixing Bracket(Vertical)	2
P3	Metal Clip	2
P4	Countersunk Screw	4



## INSTALLATION:

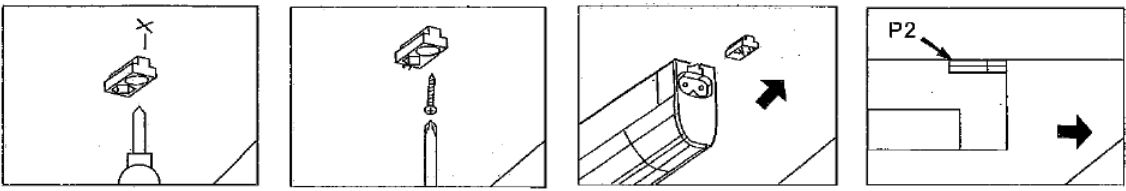
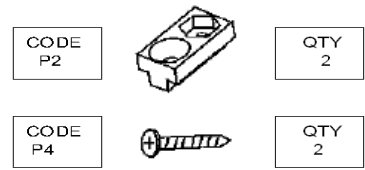
### 1. Horizontal Fitting

- 1) Slide fixing brackets (P1) into grooves at either end of light fitting.
- 2) Position light appropriately on underside of wall unit and bradawl through holes in brackets. Ensure connecting leads reach from light to light.
- 3) Secure light in position with screws (P4).
- 4) Finally connect adjoining lights together with leads provided.

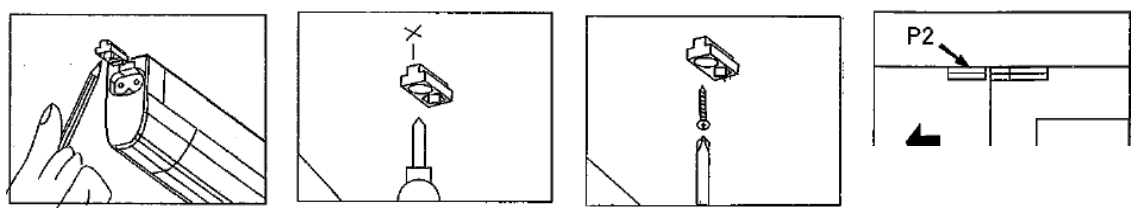


### 2. Vertical Fitting: Vertical bracket

- 1) Position light appropriately on underside of wall units. Ensure connecting leads will reach from light to light. Mark and bradawl position of fixing bracket. This should be concealed when the light is in its final position.
- 2) Secure bracket (P2) in position with screw (P4).
- 3) Slide light fully onto secured bracket.

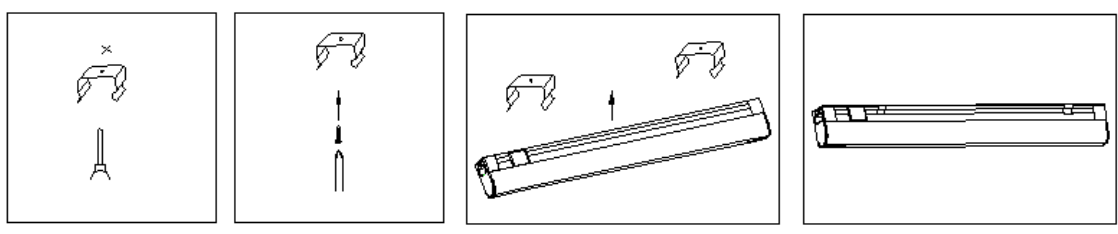
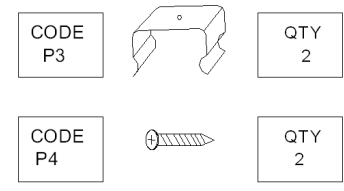


- 4) Mark and bradawl position of remaining bracket at opposite end of light. Ensure bracket is located up to the Light and aligned with the groove.
- 5) Secure bracket (P2) in position with screw (P4).
- 6) Slide light fitting over brackets (P2). Light should be equally spaced on brackets.
- 7) Finally connect adjoining lights together with leads provided.



**3. Vertical Fitting: Metal clip**

- 1) Position light appropriately on underside of wall units. Ensure connecting leads reach from light to light. Mark and bradawl position of fixing bracket. This should be concealed when the light is in its final position.
- 2) Secure bracket (P3) in position with screw (P4).
- 3) Slide light fully onto secured bracket.



**Relamping:**

- 1) Pry one side of the lens at the end.
- 2) Continue lifting the lens across its length until it releases from the fixture.
- 3) Grasp one end of the lamp and pull gently outward while twisting.
- 4) Repeat on the opposite side of the lamp.
- 5) Installation is the reverse procedure.

