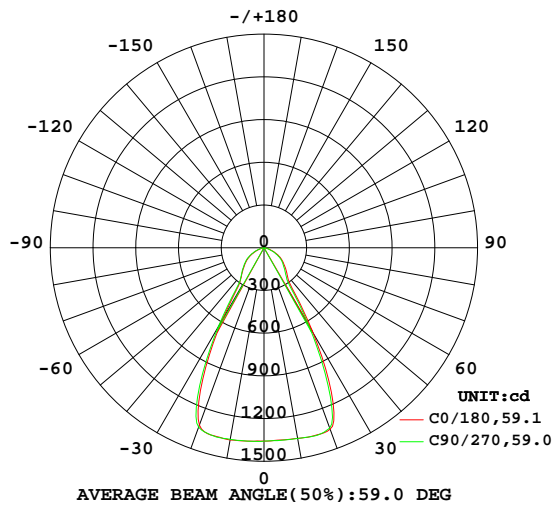


LUMINAIRE PHOTOMETRIC TEST REPORT

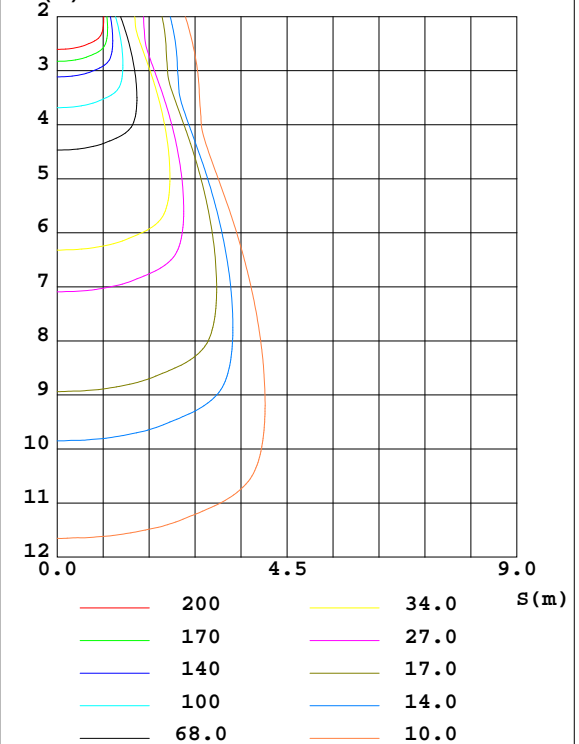
Test:U:120.00V I:0.3030A P:20.830W PF:0.5731 Freq:60.00Hz Lamp Flux:1619.04x1 lm		
NAME: 5212-40BZ-60°-21W	TYPE:Landscape Lighting	WEIGHT:
SPEC.:	DIM.:	SERIAL No.:
MFR.: WAC Lighting	SUR.:	Shielding Angle:

DATA OF LAMP		PHOTOMETRIC DATA Eff: 77.73 lm/W			
MODEL		Imax(cd)	1373	S/MH(C0/180)	0.87
NOMINAL POWER(W)		LOR(%)	100.0	S/MH(C90/270)	0.86
RATED VOLTAGE(V)	120	TOTAL FLUX(lm)	1619.0	η UP,DN(C0-180)	0.0,49.8
NOMINAL FLUX(lm)	1619.04	CIE CLASS	DIRECT	η UP,DN(C180-360)	0.1,50.1
LAMPS INSIDE	1	η up(%)	0.1	CIBSE SHR NOM	0.75
TEST VOLTAGE(V)	120	η down(%)	99.9	CIBSE SHR MAX	0.85

LUMINOUS INTENSITY DISTRIBUTION DIAGRAM



C0 PLANE ISOLUX DIAGRAM (UNIT:lx)



C Range: 0 - 360DEG
C Interval: 22.5DEG
Test Speed: HIGH
Temperature:25.2DEG
Operators:Oliver
Test Date:2018-05-18

γ Range: 0 - 180DEG
 γ Interval: 1.0DEG
Test System:EVERFINE GO-R5000_V2 SYSTEM V2.0.366
Humidity:65.0%
Test Distance:2.464m [K=1.0000]
Remarks:

ZONAL FLUX DIAGRAM

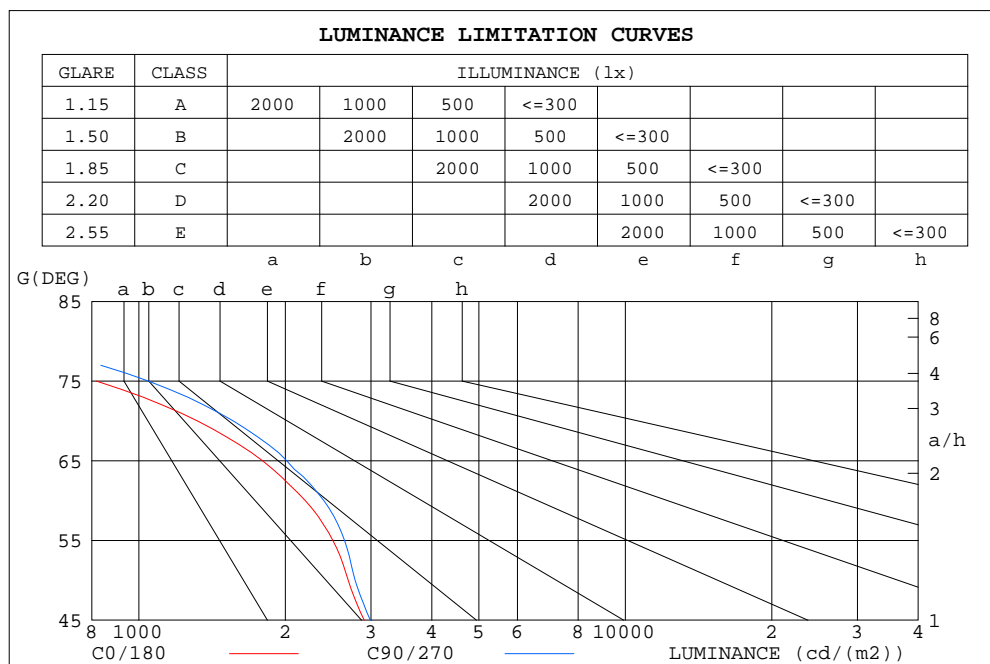
ZONAL FLUX DIAGRAM:

γ	C0	C45	C90	C135	C180	C225	C270	C315	γ	Φ zone	Φ total	$\%lum, lamp$
10	1371	1366	1366	1362	1359	1355	1359	1366	0- 10	129.9	129.9	8.02,8.02
20	1327	1327	1342	1351	1356	1338	1348	1327	10- 20	385.6	515.5	31.8,31.8
30	590.7	595.4	640.9	659.6	688.4	675.4	630.9	610.1	20- 30	471.5	987.0	61,61
40	243.9	237.8	246.6	245.8	255.7	248.8	235.9	240.9	30- 40	222.2	1209	74.7,74.7
50	173.2	173.6	179.0	180.5	184.3	179.5	173.3	173.8	40- 50	161.4	1371	84.7,84.7
60	110.0	114.2	120.0	123.6	126.0	120.7	115.1	111.9	50- 60	133.1	1504	92.9,92.9
70	45.14	49.00	53.49	56.38	57.98	53.69	49.40	46.47	60- 70	82.59	1586	98,98
80	6.737	7.706	9.653	10.61	11.04	9.579	7.866	6.796	70- 80	28.60	1615	99.7,99.7
90	0.0001	0.0016	0.0209	0.0760	0.1103	0.0376	0.0038	0.0048	80- 90	2.677	1618	99.9,99.9
100	0.0091	0.0088	0.0088	0.0081	0.0110	0.0139	0.0164	0.0167	90-100	0.0079	1618	99.9,99.9
110	0.0336	0.0308	0.0289	0.0288	0.0281	0.0312	0.0340	0.0337	100-110	0.0209	1618	99.9,99.9
120	0.0770	0.0741	0.0694	0.0691	0.0802	0.0833	0.0883	0.0883	110-120	0.0505	1618	99.9,99.9
130	0.1957	0.1931	0.1881	0.1817	0.2564	0.2618	0.2733	0.2757	120-130	0.1259	1618	99.9,99.9
140	0.3259	0.3223	0.3167	0.3128	0.5536	0.5613	0.5725	0.5779	130-140	0.2571	1618	99.9,99.9
150	0.5168	0.5124	0.5085	0.5035	0.8282	0.8367	0.8415	0.8451	140-150	0.3505	1618	100,100
160	0.6999	0.6949	0.6897	0.6824	1.012	1.017	1.017	1.018	150-160	0.3515	1619	100,100
170	0.8694	0.8674	0.8632	0.8603	1.118	1.123	1.120	1.115	160-170	0.2613	1619	100,100
180	1.117	1.119	1.119	1.113	1.113	1.115	1.117	1.111	170-180	0.1001	1619	100,100
DEG	LUMINOUS INTENSITY:cd									UNIT:lm		

C Range: 0 - 360DEG
 C Interval: 22.5DEG
 Test Speed: HIGH
 Temperature:25.2DEG
 Operators:Oliver
 Test Date:2018-05-18

γ Range: 0 - 180DEG
 γ Interval: 1.0DEG
 γ Test System:EVERFINE GO-R5000_V2 SYSTEM V2.0.366
 Humidity:65.0%
 Test Distance:2.464m [K=1.0000]
 Remarks:

LUMINANCE LIMITATION CURVES



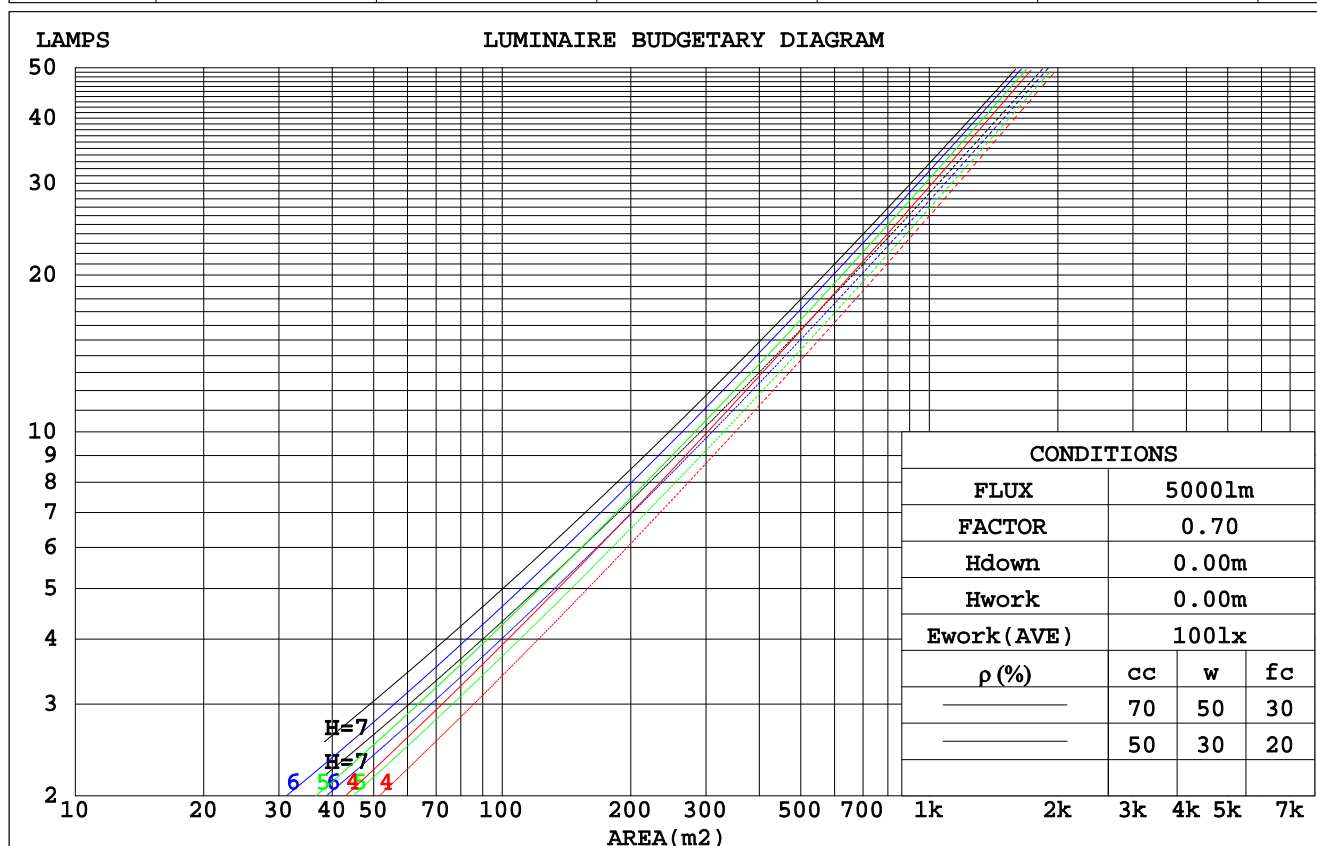
LUMINANCE cd/(m2)		
G(DEG)	C0/180	C90/270
85	124	192
80	388	556
75	818	1047
70	1320	1564
65	1796	2013
60	2199	2400
55	2506	2648
50	2694	2784
45	2906	2991

C Range: 0 - 360DEG
C Interval: 22.5DEG
Test Speed: HIGH
Temperature: 25.2DEG
Operators: Oliver
Test Date: 2018-05-18

γ Range: 0 - 180DEG
γ Interval: 1.0DEG
Test System: EVERFINE GO-R5000_V2 SYSTEM V2.0.366
Humidity: 65.0%
Test Distance: 2.464m [K=1.0000]
Remarks:

CU AND LUMINAIRE BUDGETARY ESTIMATE DIAGRAM

pcc	80%			70%			50%			30%			10%			0
p _w	50%	30%	10%	50%	30%	10%	50%	30%	10%	50%	30%	10%	50%	30%	10%	0
p _{fc}	20%			20%			20%			20%			20%			0
RCR	RCR:Room Cavity Ratio			Coefficients of Utilization(CU)												
0.0	1.19	1.19	1.19	1.16	1.16	1.16	1.11	1.11	1.11	1.06	1.06	1.06	1.02	1.02	1.02	.00
1.0	1.09	1.06	1.03	1.07	1.04	1.01	1.02	1.00	.98	.99	.97	.95	.95	.94	.93	.91
2.0	.99	.94	.90	.97	.93	.89	.94	.90	.87	.91	.88	.85	.88	.86	.83	.82
3.0	.91	.85	.80	.89	.84	.79	.87	.82	.78	.84	.80	.77	.82	.78	.76	.74
4.0	.84	.77	.72	.82	.76	.72	.80	.75	.71	.78	.73	.70	.76	.72	.69	.67
5.0	.77	.70	.65	.76	.70	.65	.74	.69	.64	.73	.68	.64	.71	.67	.63	.62
6.0	.72	.65	.60	.71	.64	.60	.69	.64	.59	.68	.63	.59	.66	.62	.58	.57
7.0	.67	.60	.55	.66	.60	.55	.65	.59	.55	.64	.58	.54	.62	.58	.54	.53
8.0	.63	.56	.51	.62	.56	.51	.61	.55	.51	.60	.55	.51	.59	.54	.50	.49
9.0	.59	.52	.48	.58	.52	.48	.57	.52	.47	.56	.51	.47	.55	.51	.47	.46
10.0	.55	.49	.45	.55	.49	.45	.54	.48	.44	.53	.48	.44	.52	.48	.44	.43



C Range: 0 - 360DEG
 C Interval: 22.5DEG
 Test Speed: HIGH
 Temperature: 25.2DEG
 Operators: Oliver
 Test Date: 2018-05-18

γ Range: 0 - 180DEG
 γ Interval: 1.0DEG
 Test System: EVERFINE GO-R5000_V2 SYSTEM V2.0.366
 Humidity: 65.0%
 Test Distance: 2.464m [K=1.0000]
 Remarks:

WEC AND CCEC

pcc	80%			70%			50%			30%			10%			0	
ρw	50%	30%	10%	50%	30%	10%	50%	30%	10%	50%	30%	10%	50%	30%	10%	0	
ρfc	20%			20%			20%			20%			20%			0	
RCR	RCR:Room Cavity Ratio						Wall Exitance Coefficients(WEC)										
0.0																	
1.0	.215	.122	.039	.208	.119	.038	.196	.112	.036	.184	.106	.034	.173	.100	.032		
2.0	.207	.114	.035	.202	.111	.034	.191	.106	.033	.180	.101	.032	.171	.097	.031		
3.0	.196	.104	.031	.191	.102	.031	.182	.098	.030	.173	.095	.029	.165	.091	.028		
4.0	.185	.096	.028	.180	.094	.028	.172	.091	.027	.164	.088	.027	.157	.085	.026		
5.0	.174	.089	.026	.170	.087	.025	.163	.085	.025	.156	.082	.025	.150	.080	.024		
6.0	.164	.082	.024	.161	.081	.023	.154	.079	.023	.148	.077	.023	.143	.075	.022		
7.0	.155	.077	.022	.152	.076	.022	.146	.074	.021	.141	.072	.021	.136	.071	.021		
8.0	.147	.072	.020	.144	.071	.020	.139	.070	.020	.134	.068	.020	.130	.067	.019		
9.0	.139	.067	.019	.137	.067	.019	.132	.065	.019	.128	.064	.018	.124	.063	.018		
10.0	.133	.064	.018	.131	.063	.018	.126	.062	.017	.122	.061	.017	.119	.060	.017		

ρcc	80%			70%			50%			30%			10%			0
ρw	50%	30%	10%	50%	30%	10%	50%	30%	10%	50%	30%	10%	50%	30%	10%	0
ρfc	20%			20%			20%			20%			20%			0
RCR	RCR:Room Cavity Ratio						Ceiling Cavity Exitance Coefficients(CCEC)									
0.0	.191	.191	.191	.163	.163	.163	.112	.112	.112	.064	.064	.064	.020	.020	.020	
1.0	.174	.158	.143	.149	.135	.123	.102	.093	.085	.059	.054	.049	.019	.017	.016	
2.0	.162	.133	.109	.139	.115	.094	.095	.079	.066	.055	.046	.039	.018	.015	.013	
3.0	.151	.115	.085	.129	.099	.074	.089	.069	.052	.051	.040	.031	.016	.013	.010	
4.0	.142	.100	.069	.122	.087	.060	.084	.060	.042	.048	.035	.025	.016	.012	.008	
5.0	.134	.089	.056	.115	.077	.049	.079	.054	.035	.046	.032	.021	.015	.010	.007	
6.0	.126	.080	.047	.109	.069	.041	.075	.049	.029	.043	.029	.017	.014	.009	.006	
7.0	.120	.073	.040	.103	.063	.035	.071	.044	.025	.041	.026	.015	.013	.009	.005	
8.0	.114	.067	.034	.098	.058	.030	.068	.041	.021	.039	.024	.013	.013	.008	.004	
9.0	.108	.062	.030	.093	.053	.026	.065	.038	.019	.038	.022	.011	.012	.007	.004	
10.0	.103	.057	.027	.089	.050	.023	.062	.035	.016	.036	.021	.010	.012	.007	.003	

C Range: 0 - 360DEG
 C Interval: 22.5DEG
 Test Speed: HIGH
 Temperature: 25.2DEG
 Operators: Oliver
 Test Date: 2018-05-18

γ Range: 0 - 180DEG
 γ Interval: 1.0DEG
 Test System: EVERFINE GO-R5000_V2 SYSTEM V2.0.366
 Humidity: 65.0%
 Test Distance: 2.464m [K=1.0000]
 Remarks:

UGR(Unified Glare Rating) Table

ceiling/cavity	0.7	0.7	0.5	0.5	0.3	0.7	0.7	0.5	0.5	0.3
walls	0.5	0.3	0.5	0.3	0.3	0.5	0.3	0.5	0.3	0.3
working plane	0.2	0.2	0.2	0.2	0.2	0.2	0.2	0.2	0.2	0.2
Room dimensions	Viewed crosswise					Viewed endwise				
x = 2H y = 2H	12.0	13.1	12.2	13.3	13.5	12.3	13.4	12.5	13.6	13.8
3H	12.7	13.7	13.0	13.9	14.2	13.1	14.2	13.4	14.4	14.6
4H	12.8	13.8	13.1	14.0	14.2	13.3	14.3	13.6	14.5	14.7
6H	12.8	13.7	13.1	13.9	14.2	13.3	14.2	13.6	14.4	14.7
8H	12.7	13.6	13.0	13.9	14.1	13.2	14.1	13.6	14.4	14.7
12H	12.7	13.5	13.0	13.8	14.1	13.2	14.0	13.5	14.3	14.6
4H 2H	12.4	13.4	12.7	13.6	13.9	12.7	13.7	13.0	13.9	14.1
3H	13.2	14.1	13.5	14.3	14.6	13.6	14.4	13.9	14.7	15.0
4H	13.4	14.1	13.7	14.4	14.8	13.8	14.6	14.1	14.9	15.2
6H	13.3	14.0	13.7	14.4	14.7	13.8	14.5	14.2	14.8	15.2
8H	13.3	13.9	13.7	14.3	14.7	13.8	14.4	14.2	14.8	15.2
12H	13.3	13.8	13.7	14.2	14.6	13.7	14.3	14.2	14.7	15.1
8H 4H	13.4	14.0	13.8	14.4	14.7	13.8	14.4	14.2	14.8	15.1
6H	13.4	13.9	13.8	14.3	14.7	13.8	14.3	14.3	14.7	15.2
8H	13.3	13.8	13.8	14.2	14.7	13.8	14.3	14.2	14.7	15.1
12H	13.3	13.7	13.8	14.1	14.6	13.8	14.1	14.2	14.6	15.1
12H 4H	13.3	13.9	13.7	14.3	14.7	13.7	14.3	14.1	14.7	15.1
6H	13.3	13.8	13.8	14.2	14.7	13.8	14.2	14.2	14.7	15.1
8H	13.3	13.7	13.8	14.1	14.6	13.8	14.2	14.2	14.6	15.1
Variations with the observer position at spacings:										
S = 1.0H	+ 0.4 / - 0.5					+ 0.3 / - 0.4				
1.5H	+ 0.3 / - 0.3					+ 0.2 / - 0.3				
2.0H	+ 0.6 / - 0.7					+ 0.6 / - 0.6				

CIE Pub.117, 1619 lm Total Lamp Luminous Flux Correct ($8\log(F/F_0) = 1.7$)

C Range: 0 - 360DEG
 C Interval: 22.5DEG
 Test Speed: HIGH
 Temperature: 25.2DEG
 Operators: Oliver
 Test Date: 2018-05-18

γ Range: 0 - 180DEG
 γ Interval: 1.0DEG
 Test System: EVERFINE GO-R5000_V2 SYSTEM V2.0.366
 Humidity: 65.0%
 Test Distance: 2.464m [K=1.0000]
 Remarks:

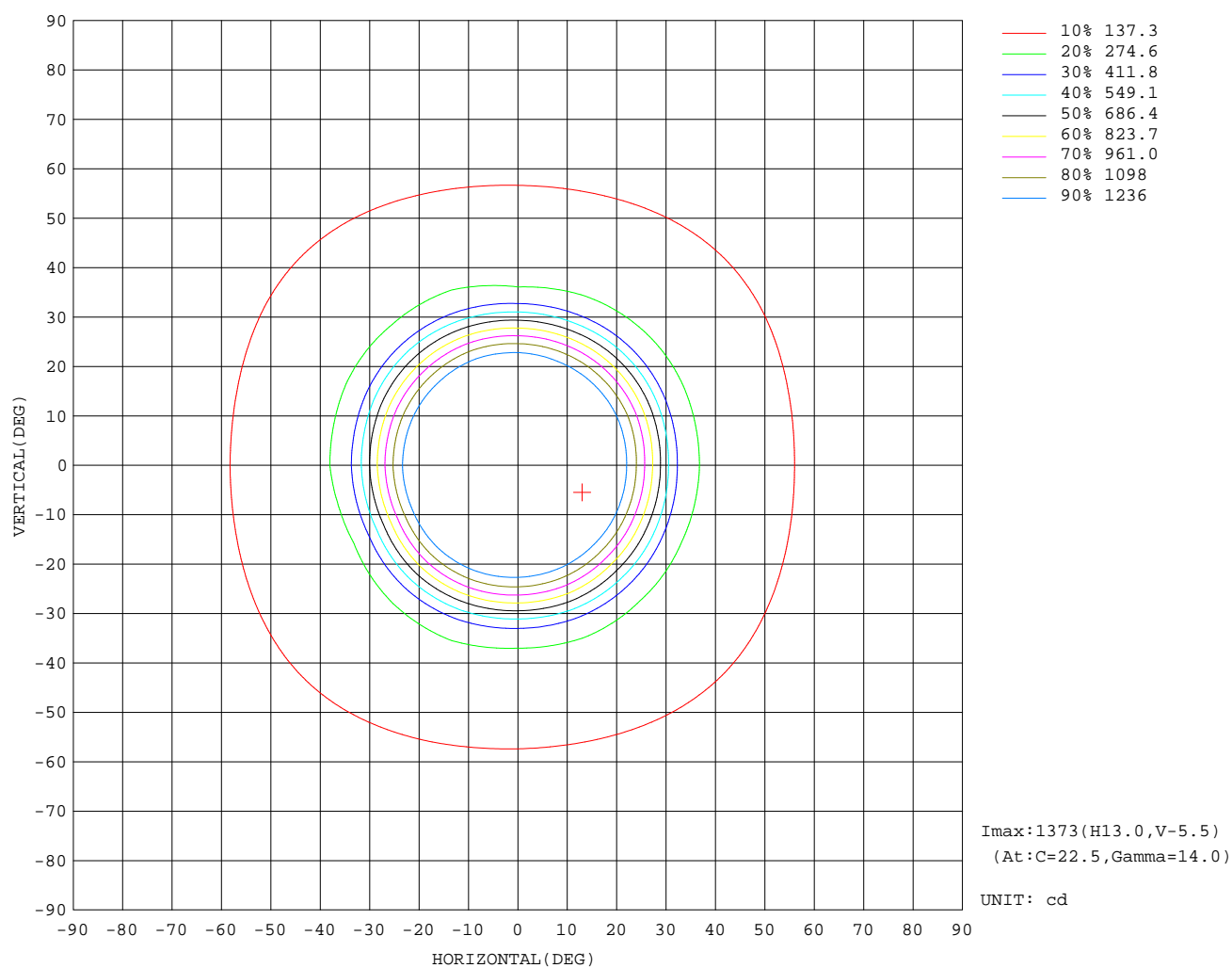
UTILIZATION FACTORS TABLE

REFLECTANCE										
Ceiling	0.8	0.8	0.8	0.7	0.7	0.7	0.5	0.5	0.5	0
Walls	0.7	0.5	0.3	0.7	0.5	0.3	0.7	0.5	0.3	0
Working plane	0.2	0.2	0.2	0.2	0.2	0.2	0.2	0.2	0.2	0
ROOM INDEX	UTILIZATION FACTORS(PERCENT) $k(RI) \times RCR = 5$									
k = 0.60	76	67	62	75	67	62	74	67	62	57
0.80	84	76	71	84	76	71	82	75	71	66
1.00	91	83	78	90	82	78	88	83	77	72
1.25	96	89	84	95	88	84	92	87	83	77
1.50	100	93	88	98	92	88	96	91	87	81
2.00	104	98	94	102	97	93	99	95	92	85
2.50	106	101	97	105	100	96	101	97	94	88
3.00	109	104	100	107	103	99	103	100	97	90
4.00	111	108	105	109	106	103	105	103	100	93
5.00	113	110	107	111	108	106	107	104	103	94
ROOM INDEX	UF(total)									Direct
According to DIN EN 13032-2 2004			Suspended					SHRNOM = 1.25		

C Range: 0 - 360DEG
 C Interval: 22.5DEG
 Test Speed: HIGH
 Temperature: 25.2DEG
 Operators: Oliver
 Test Date: 2018-05-18

γ Range: 0 - 180DEG
 γ Interval: 1.0DEG
 Test System: EVERFINE GO-R5000_V2 SYSTEM V2.0.366
 Humidity: 65.0%
 Test Distance: 2.464m [K=1.0000]
 Remarks:

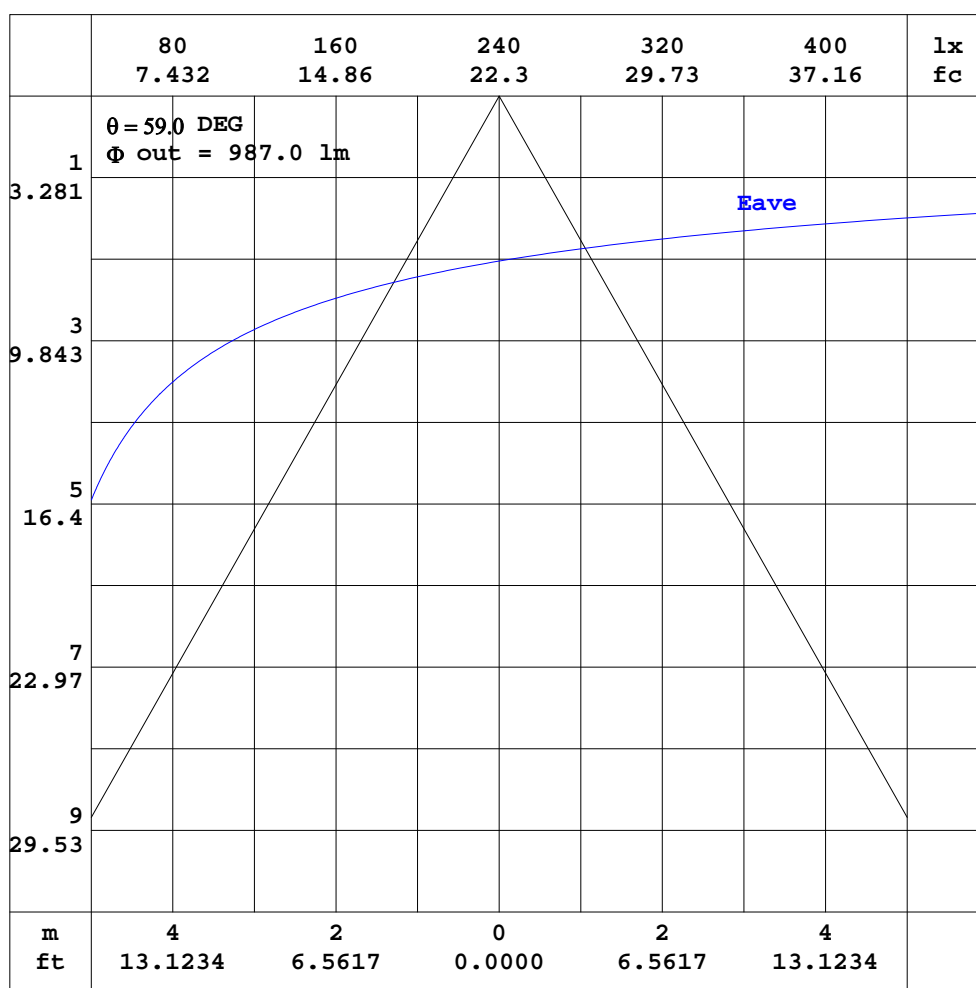
ISOCANDELA DIAGRAM



C Range: 0 - 360DEG
C Interval: 22.5DEG
Test Speed: HIGH
Temperature:25.2DEG
Operators:Oliver
Test Date:2018-05-18

γ Range: 0 - 180DEG
 γ Interval: 1.0DEG
Test System:EVERFINE GO-R5000_V2 SYSTEM V2.0.366
Humidity:65.0%
Test Distance:2.464m [K=1.0000]
Remarks:

AAI CURVES

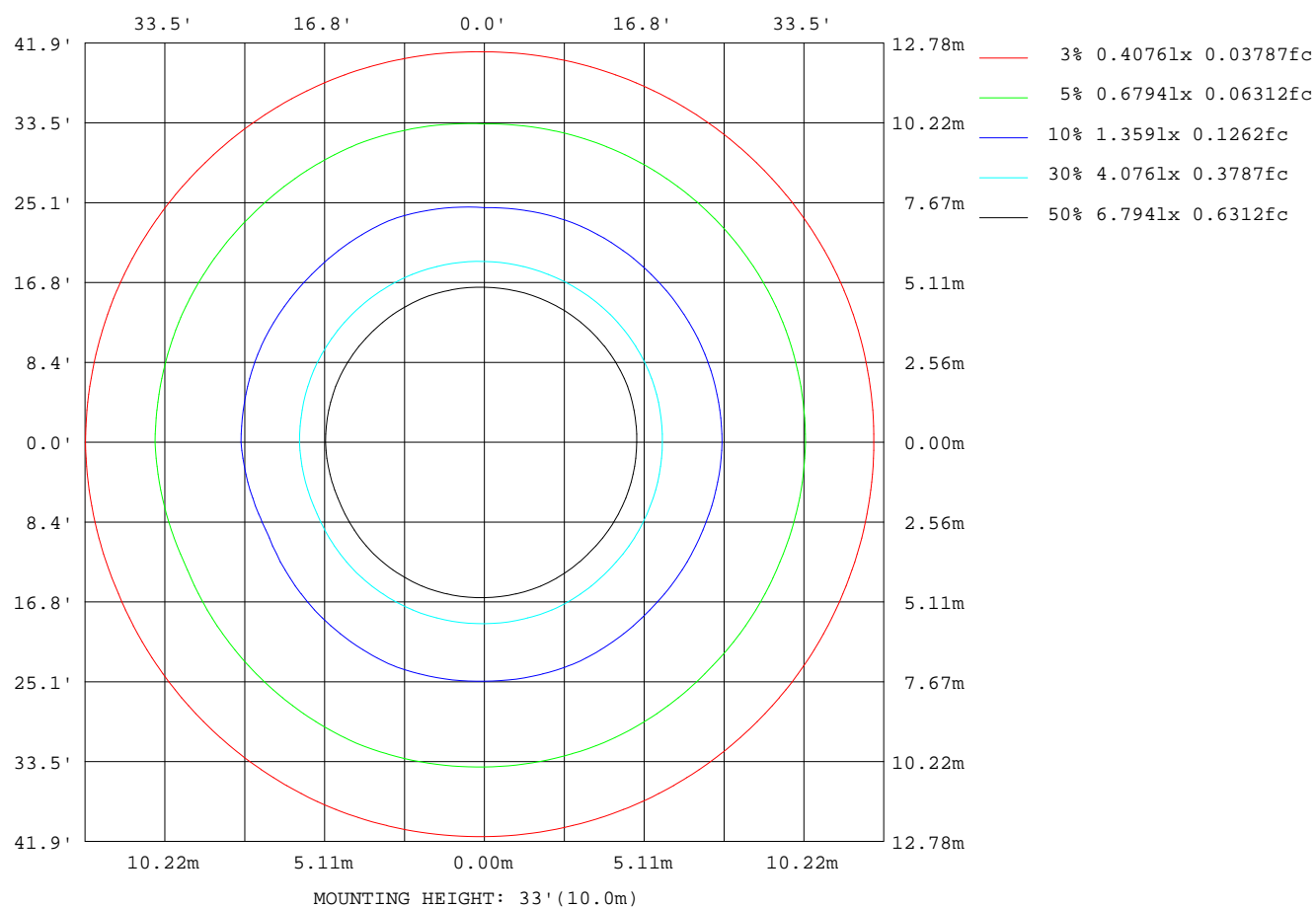


Note: The Curves indicate the illuminated area and the average illumination when the luminaire is at different distance.

C Range: 0 - 360DEG
C Interval: 22.5DEG
Test Speed: HIGH
Temperature: 25.2DEG
Operators: Oliver
Test Date: 2018-05-18

γ Range: 0 - 180DEG
 γ Interval: 1.0DEG
Test System: EVERFINE GO-R5000_V2 SYSTEM V2.0.366
Humidity: 65.0%
Test Distance: 2.464m [K=1.0000]
Remarks:

ISOLUX DIAGRAM



C Range: 0 - 360DEG
 C Interval: 22.5DEG
 Test Speed: HIGH
 Temperature: 25.2DEG
 Operators: Oliver
 Test Date: 2018-05-18

γ Range: 0 - 180DEG
 γ Interval: 1.0DEG
 Test System: EVERFINE GO-R5000_V2 SYSTEM V2.0.366
 Humidity: 65.0%
 Test Distance: 2.464m [K=1.0000]
 Remarks:

LED Avg.L Report

Test:U:120.00V I:0.3030A P:20.830W PF:0.5731 Freq:60.00Hz Lamp Flux:1619.04x1 lm		
NAME: 5212-40BZ-60°-21W	TYPE:Landscape Lighting	WEIGHT:
SPEC.:	DIM.:	SERIAL No.:
MFR.: WAC Lighting	SUR.:	Shielding Angle:

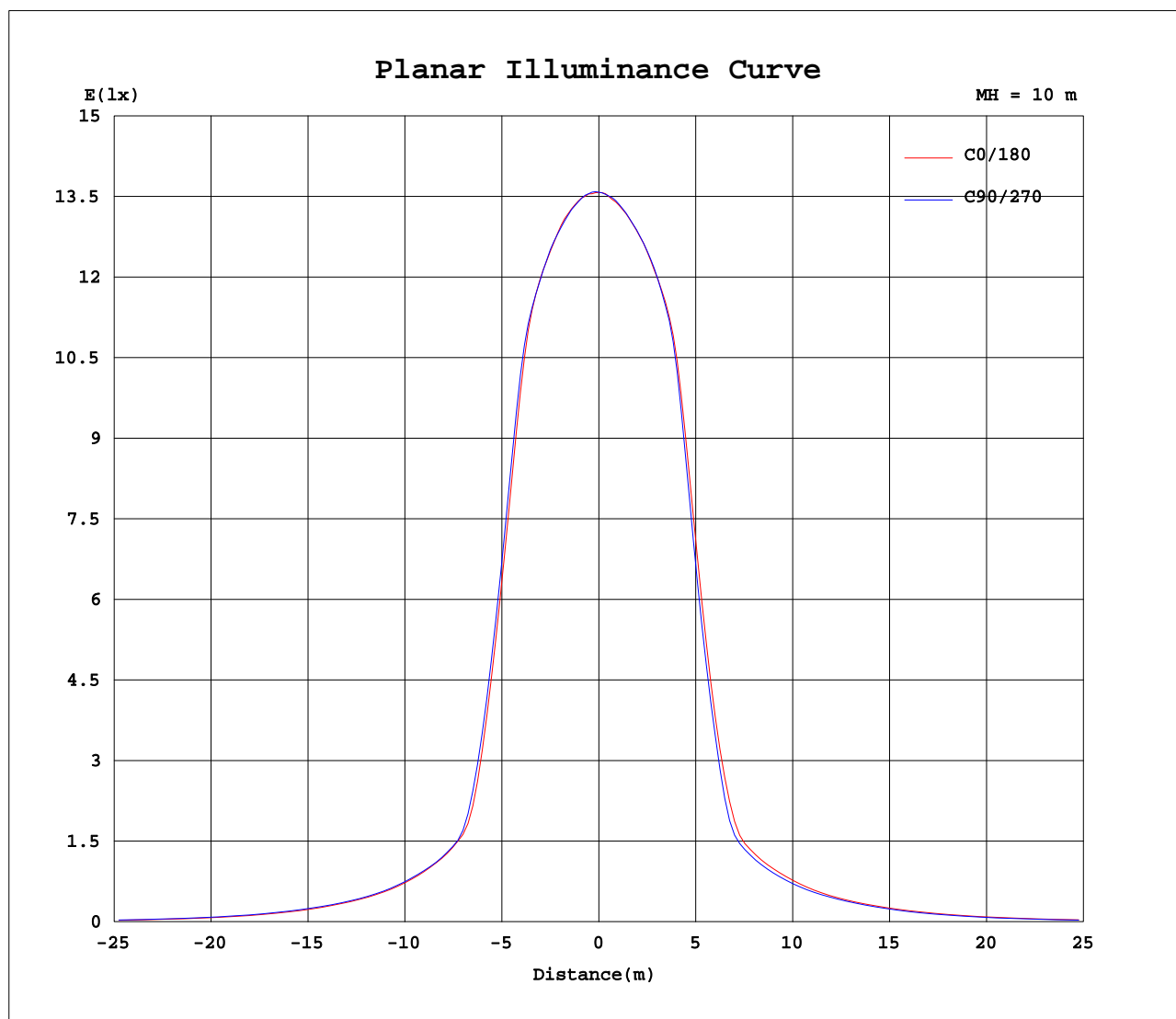
AvgL	cd/m2
L_0~180(65)av	1976
L_0~180(75)av	996
L_0~180(85)av	176
L_90~270(65)av	1962
L_90~270(75)av	989
L_90~270(85)av	177
L_45(65)av	1967
L_45(75)av	995
L_45(85)av	177

Standard: GB/T 29293-2012

C Range: 0 - 360DEG
 C Interval: 22.5DEG
 Test Speed: HIGH
 Temperature:25.2DEG
 Operators:Oliver
 Test Date:2018-05-18

γ Range: 0 - 180DEG
 γ Interval: 1.0DEG
 Test System:EVERFINE GO-R5000_V2 SYSTEM V2.0.366
 Humidity:65.0%
 Test Distance:2.464m [K=1.0000]
 Remarks:

Planar Illuminance Curve



C Range: 0 - 360DEG
C Interval: 22.5DEG
Test Speed: HIGH
Temperature: 25.2DEG
Operators: Oliver
Test Date: 2018-05-18

γ Range: 0 - 180DEG
 γ Interval: 1.0DEG
Test System: EVERFINE GO-R5000_V2 SYSTEM V2.0.366
Humidity: 65.0%
Test Distance: 2.464m [K=1.0000]
Remarks:

LUMINOUS DISTRIBUTION INTENSITY DATA

Table--1

UNIT: cd

C(DEG) γ (DEG)	0	22.5	45	67.5	90	112.5	135	157.5	180	202.5	225	247.5	270	292.5	315	337.5			
0	1358	1358	1358	1358	1358	1358	1358	1358	1358	1358	1358	1358	1358	1358	1358	1358			
5	1363	1362	1362	1362	1363	1363	1359	1358	1356	1354	1353	1355	1358	1359	1360	1361			
10	1371	1368	1366	1365	1366	1366	1362	1363	1359	1357	1355	1356	1359	1362	1366	1367			
15	1367	1372	1367	1363	1368	1370	1365	1367	1366	1360	1357	1368	1369	1363	1357	1363			
20	1327	1330	1327	1332	1342	1352	1351	1353	1356	1344	1338	1349	1348	1332	1327	1325			
25	1016	1014	1018	1049	1069	1091	1098	1094	1121	1116	1097	1091	1065	1051	1040	1041			
30	591	588	595	632	641	655	660	648	688	693	675	657	631	613	610	607			
35	297	290	293	307	310	321	319	311	340	334	322	318	294	297	294	297			
40	244	237	238	245	247	253	246	239	256	255	249	250	236	241	241	243			
45	206	202	202	209	211	216	211	208	219	217	212	210	201	204	205	207			
50	173	173	174	177	179	181	181	180	184	183	180	178	173	174	174	174			
55	144	145	147	149	152	154	154	155	157	155	153	150	147	146	145	145			
60	110	112	114	117	120	123	124	124	126	124	121	118	115	113	112	112			
65	75.9	77.8	80.3	82.9	85.1	87.6	89.0	89.5	91.1	88.9	86.0	83.2	80.8	78.8	77.3	77.2			
70	45.1	46.8	49.0	51.1	53.5	55.1	56.4	56.9	58.0	56.1	53.7	51.3	49.4	47.5	46.5	46.4			
75	21.2	22.3	23.8	25.3	27.1	28.4	29.2	29.6	30.4	29.1	27.4	25.5	24.1	23.4	22.6	22.4			
80	6.74	7.25	7.71	8.74	9.65	10.0	10.6	10.7	11.0	10.4	9.58	8.63	7.87	7.19	6.80	6.77			
85	1.08	1.19	1.33	1.50	1.68	1.84	1.94	1.94	1.99	1.86	1.70	1.54	1.41	1.29	1.20	1.17			
90	0.00	0.00	0.00	0.00	0.02	0.05	0.08	0.08	0.11	0.08	0.04	0.01	0.00	0.00	0.00	0.01			
95	0.00	0.00	0.00	0.00	0.00	0.00	0.00	0.00	0.01	0.01	0.01	0.01	0.01	0.01	0.01	0.01			
100	0.01	0.01	0.01	0.01	0.01	0.01	0.01	0.01	0.01	0.01	0.01	0.01	0.01	0.02	0.02	0.02			
105	0.02	0.02	0.02	0.02	0.02	0.02	0.02	0.02	0.02	0.02	0.02	0.02	0.02	0.02	0.02	0.02			
110	0.03	0.03	0.03	0.03	0.03	0.03	0.03	0.03	0.03	0.03	0.03	0.03	0.03	0.03	0.03	0.03			
115	0.05	0.05	0.05	0.05	0.05	0.04	0.04	0.04	0.05	0.05	0.05	0.05	0.05	0.05	0.05	0.05			
120	0.08	0.08	0.07	0.07	0.07	0.07	0.07	0.07	0.08	0.08	0.08	0.09	0.09	0.09	0.09	0.09			
125	0.13	0.13	0.12	0.12	0.12	0.11	0.11	0.11	0.14	0.15	0.15	0.15	0.16	0.16	0.16	0.16			
130	0.20	0.20	0.19	0.19	0.19	0.18	0.18	0.18	0.26	0.26	0.26	0.27	0.27	0.27	0.28	0.28			
135	0.26	0.26	0.26	0.25	0.25	0.25	0.25	0.25	0.40	0.41	0.41	0.42	0.42	0.43	0.43	0.43			
140	0.33	0.32	0.32	0.32	0.32	0.32	0.31	0.31	0.55	0.56	0.56	0.57	0.57	0.58	0.58	0.58			
145	0.42	0.42	0.42	0.42	0.41	0.41	0.41	0.41	0.70	0.70	0.71	0.71	0.72	0.72	0.72	0.73			
150	0.52	0.52	0.51	0.51	0.51	0.51	0.50	0.50	0.83	0.83	0.84	0.84	0.84	0.84	0.85	0.85			
155	0.60	0.60	0.60	0.59	0.59	0.59	0.59	0.59	0.93	0.93	0.93	0.93	0.94	0.94	0.94	0.94			
160	0.70	0.70	0.69	0.69	0.69	0.69	0.68	0.68	1.01	1.01	1.02	1.02	1.02	1.02	1.02	1.02			
165	0.79	0.79	0.79	0.78	0.78	0.78	0.78	0.78	1.08	1.08	1.08	1.08	1.08	1.08	1.08	1.08			
170	0.87	0.87	0.87	0.87	0.86	0.86	0.86	0.86	1.12	1.12	1.12	1.12	1.12	1.12	1.11	1.12			
175	1.04	1.04	1.04	1.04	1.04	1.04	1.03	1.03	1.13	1.13	1.13	1.13	1.13	1.13	1.13	1.13			
180	1.12	1.12	1.12	1.12	1.12	1.11	1.11	1.11	1.11	1.11	1.12	1.12	1.12	1.11	1.11	1.11			

C Range: 0 - 360DEG
 C Interval: 22.5DEG
 Test Speed: HIGH
 Temperature: 25.2DEG
 Operators: Oliver
 Test Date: 2018-05-18

γ Range: 0 - 180DEG
 γ Interval: 1.0DEG
 Test System: EVERFINE GO-R5000_V2 SYSTEM V2.0.366
 Humidity: 65.0%
 Test Distance: 2.464m [K=1.0000]
 Remarks: