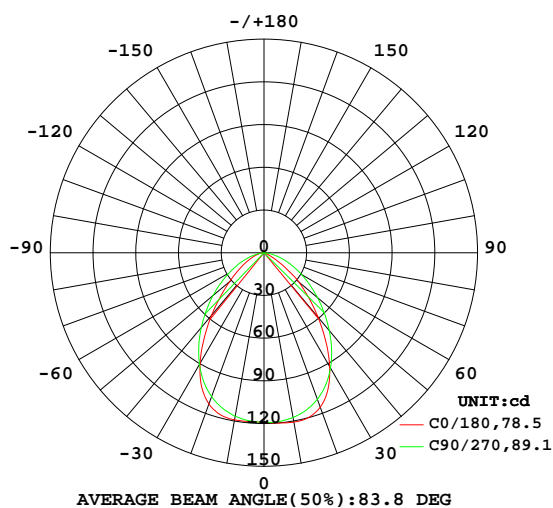


## LUMINAIRE PHOTOMETRIC TEST REPORT

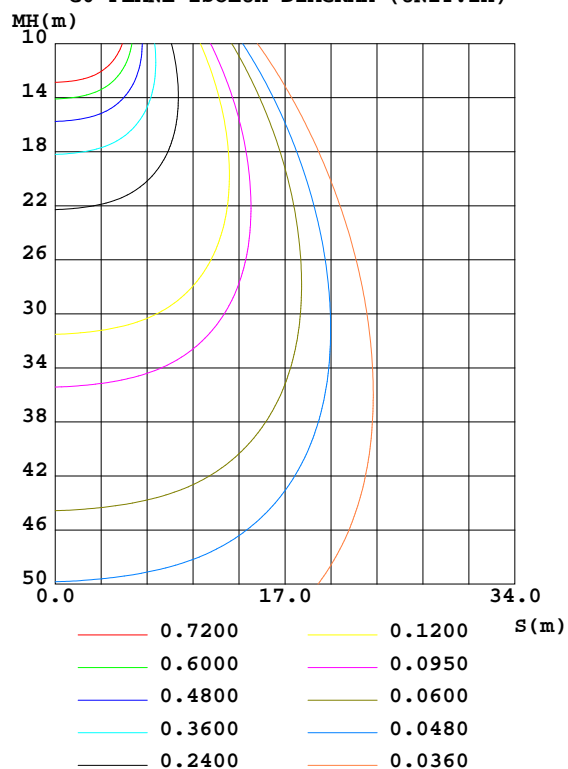
Test:U:120.08V I:0.0680A P:5.8200W PF:0.7030 Freq:60.00Hz Lamp Flux:232.524x1 lm		
NAME: 5121-30-4W	TYPE:mimi flood	WEIGHT:
SPEC.:	DIM.:	SERIAL No.:
MFR.: WAC Lighting	SUR.:	Shielding Angle:

DATA OF LAMP		PHOTOMETRIC DATA Eff: 39.95 lm/W			
MODEL		I <sub>max</sub> (cd)	120.8	S/MH(C0/180)	1.13
NOMINAL POWER(W)	NA	LOR(%)	100.0	S/MH(C90/270)	1.16
RATED VOLTAGE(V)	120	TOTAL FLUX(lm)	232.52	η UP,DN(C0-180)	0.0,49.5
NOMINAL FLUX(lm)	232.524	CIE CLASS	DIRECT	η UP,DN(C180-360)	0.0,50.4
LAMPS INSIDE	1	η up(%)	0.1	CIBSE SHR NOM	1.25
TEST VOLTAGE(V)	120	η down(%)	99.9	CIBSE SHR MAX	1.25

LUMINOUS INTENSITY DISTRIBUTION DIAGRAM



C0 PLANE ISOLUX DIAGRAM (UNIT:lx)



C Range: 0 - 360DEG  
 C Interval: 22.5DEG  
 Test Speed: HIGH  
 Temperature:25.3DEG  
 Operators:Oliver  
 Test Date:2017-05-31

γ Range: 0 - 180DEG  
 γ Interval: 1.0DEG  
 Test System:EVERFINE GO-R5000\_V2 SYSTEM V2.0.366  
 Humidity:65.0%  
 Test Distance:2.477m [K=1.0000]  
 Remarks:

## ZONAL FLUX DIAGRAM

## ZONAL FLUX DIAGRAM:

$\gamma$	C0	C45	C90	C135	C180	C225	C270	C315	$\gamma$	$\Phi$ zone	$\Phi$ total	%lum,lamp
10	119.2	118.2	116.5	118.9	120.8	119.8	117.4	118.0	0- 10	11.36	11.36	4.88,4.88
20	113.0	112.8	107.6	113.4	115.4	115.6	109.6	113.0	10- 20	32.89	44.25	19,19
30	89.87	95.01	90.65	97.28	92.25	98.80	93.41	97.70	20- 30	48.14	92.39	39.7,39.7
40	57.24	66.64	68.59	70.86	58.92	69.69	71.41	72.20	30- 40	50.54	142.9	61.5,61.5
50	31.50	39.37	46.67	43.72	32.13	41.23	49.19	45.21	40- 50	41.27	184.2	79.2,79.2
60	16.29	20.86	28.23	23.68	8.991	20.00	30.26	25.03	50- 60	27.55	211.8	91.1,91.1
70	7.715	9.849	14.24	5.456	0.1250	3.410	15.76	12.34	60- 70	14.53	226.3	97.3,97.3
80	2.456	3.037	3.761	0	0	0	4.126	4.151	70- 80	5.350	231.6	99.6,99.6
90	0.0749	0.0465	0	0	0	0	0	0.0384	80- 90	0.7598	232.4	99.9,99.9
100	0.0000	0	0	0	0	0	0	0	90-100	0.0096	232.4	99.9,99.9
110	0	0	0	0	0	0	0	0	100-110	0.0000	232.4	99.9,99.9
120	0	0	0	0	0.0005	0.0014	0.0007	0.0007	110-120	0.0000	232.4	99.9,99.9
130	0.0099	0.0106	0.0130	0.0135	0.0242	0.0246	0.0230	0.0239	120-130	0.0070	232.4	100,100
140	0.0291	0.0269	0.0257	0.0288	0.0540	0.0519	0.0481	0.0507	130-140	0.0221	232.4	100,100
150	0.0511	0.0469	0.0433	0.0473	0.0784	0.0760	0.0691	0.0727	140-150	0.0313	232.5	100,100
160	0.0665	0.0632	0.0570	0.0632	0.0914	0.0900	0.0809	0.0821	150-160	0.0313	232.5	100,100
170	0.0821	0.0800	0.0735	0.0792	0.0994	0.0979	0.0894	0.0902	160-170	0.0225	232.5	100,100
180	0.1000	0.0942	0.0859	0.0926	0.0980	0.0983	0.0904	0.0890	170-180	0.0086	232.5	100,100
DEG	LUMINOUS INTENSITY:cd									UNIT:lm		

Conical surface Flux(90deg): 165.15 lm

%lum = 71.0%

%lamp = 71.0%

Conical surface Flux(120deg): 211.76 lm

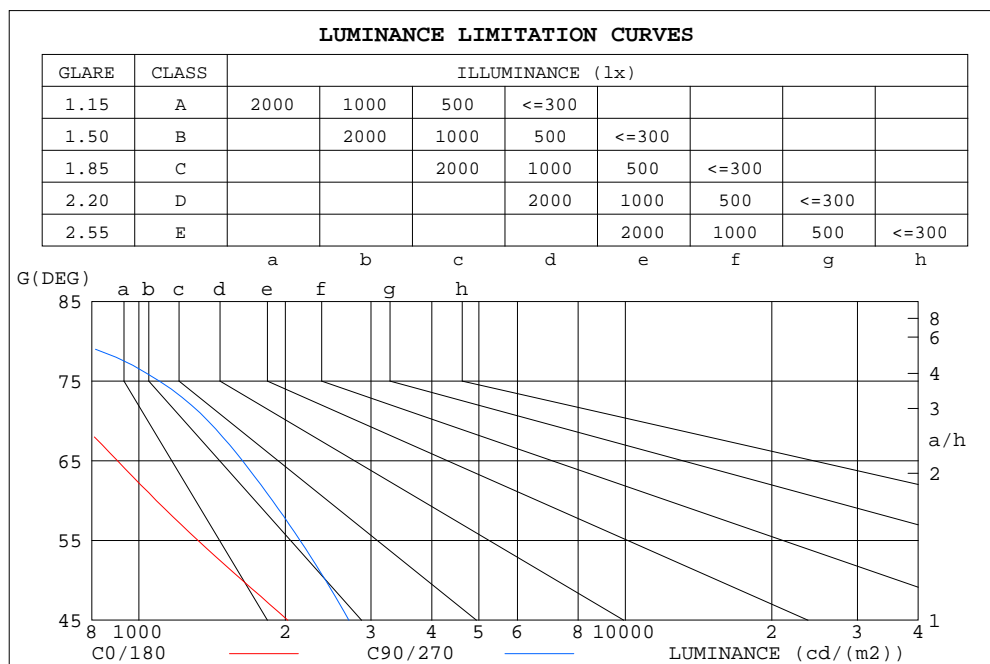
%lum = 91.1%

%lamp = 91.1%

C Range: 0 - 360DEG  
 C Interval: 22.5DEG  
 Test Speed: HIGH  
 Temperature:25.3DEG  
 Operators:Oliver  
 Test Date:2017-05-31

$\gamma$  Range: 0 - 180DEG  
 $\gamma$  Interval: 1.0DEG  
 Test System:EVERFINE GO-R5000\_V2 SYSTEM V2.0.366  
 Humidity:65.0%  
 Test Distance:2.477m [K=1.0000]  
 Remarks:

## LUMINANCE LIMITATION CURVES



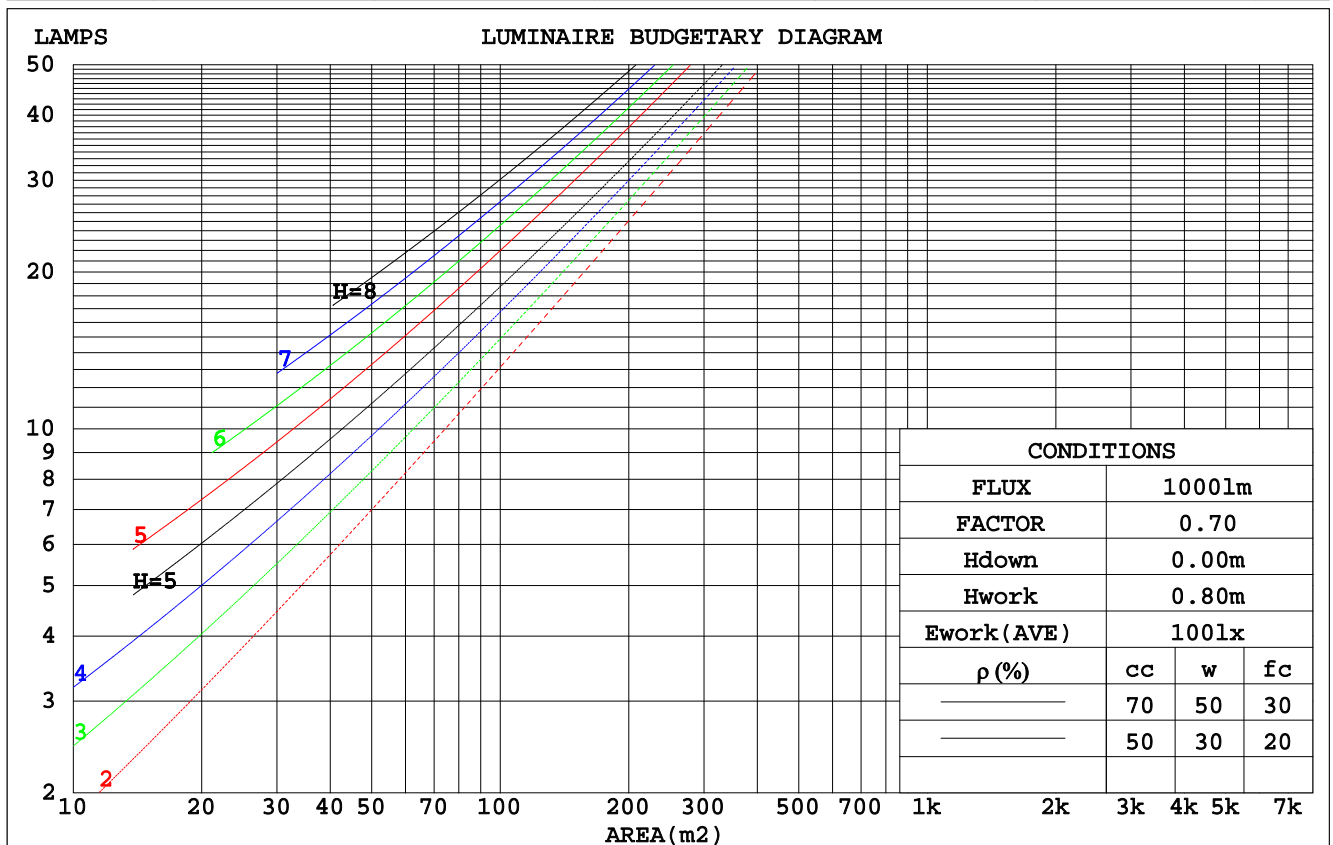
LUMINANCE cd/(m2)		
G(DEG)	C0/180	C90/270
85	277	180
80	471	722
75	622	1102
70	752	1388
65	904	1634
60	1086	1882
55	1324	2144
50	1633	2420
45	2023	2702

C Range: 0 - 360DEG  
 C Interval: 22.5DEG  
 Test Speed: HIGH  
 Temperature: 25.3DEG  
 Operators: Oliver  
 Test Date: 2017-05-31

γ Range: 0 - 180DEG  
 γ Interval: 1.0DEG  
 Test System: EVERFINE GO-R5000\_V2 SYSTEM V2.0.366  
 Humidity: 65.0%  
 Test Distance: 2.477m [K=1.0000]  
 Remarks:

## CU AND LUMINAIRE BUDGETARY ESTIMATE DIAGRAM

pcc	80%			70%			50%			30%			10%			0
ρw	50%	30%	10%	50%	30%	10%	50%	30%	10%	50%	30%	10%	50%	30%	10%	0
ρfc	20%			20%			20%			20%			20%			0
RCR	RCR:Room Cavity Ratio						Coefficients of Utilization(CU)									
0.0	1.19	1.19	1.19	1.16	1.16	1.16	1.11	1.11	1.11	1.06	1.06	1.06	1.02	1.02	1.02	.00
1.0	1.07	1.04	1.01	1.05	1.02	.99	1.01	.98	.96	.97	.95	.93	.94	.92	.90	.89
2.0	.96	.91	.86	.94	.89	.85	.91	.87	.83	.88	.84	.81	.85	.82	.79	.77
3.0	.86	.80	.74	.85	.79	.74	.82	.77	.72	.79	.75	.71	.77	.73	.70	.68
4.0	.78	.71	.65	.77	.70	.64	.74	.68	.64	.72	.67	.63	.70	.66	.62	.60
5.0	.71	.63	.57	.70	.62	.57	.68	.61	.56	.66	.60	.56	.64	.59	.55	.53
6.0	.65	.57	.51	.64	.56	.51	.62	.55	.50	.60	.54	.50	.59	.54	.50	.48
7.0	.59	.51	.46	.58	.51	.46	.57	.50	.45	.56	.50	.45	.54	.49	.45	.43
8.0	.54	.47	.42	.54	.47	.41	.53	.46	.41	.51	.45	.41	.50	.45	.41	.39
9.0	.50	.43	.38	.50	.43	.38	.49	.42	.38	.48	.42	.37	.47	.41	.37	.36
10.0	.47	.40	.35	.46	.39	.35	.45	.39	.34	.44	.39	.34	.44	.38	.34	.33



C Range: 0 - 360DEG  
 C Interval: 22.5DEG  
 Test Speed: HIGH  
 Temperature: 25.3DEG  
 Operators: Oliver  
 Test Date: 2017-05-31

γ Range: 0 - 180DEG  
 γ Interval: 1.0DEG  
 Test System: EVERFINE GO-R5000\_V2 SYSTEM V2.0.366  
 Humidity: 65.0%  
 Test Distance: 2.477m [K=1.0000]  
 Remarks:

## WEC AND CCEC

pcc	80%			70%			50%			30%			10%			0	
pw	50%	30%	10%	50%	30%	10%	50%	30%	10%	50%	30%	10%	50%	30%	10%	0	
pfc	20%			20%			20%			20%			20%			0	
RCR	RCR:Room Cavity Ratio						Wall Exitance Coefficients(WEC)										
0.0																	
1.0	.244	.139	.044	.237	.135	.043	.224	.128	.041	.212	.122	.039	.201	.116	.038		
2.0	.237	.130	.040	.231	.127	.039	.219	.122	.038	.209	.117	.037	.199	.113	.036		
3.0	.225	.119	.036	.219	.117	.035	.209	.114	.035	.200	.110	.034	.192	.106	.033		
4.0	.212	.110	.032	.207	.108	.032	.198	.105	.031	.190	.102	.031	.183	.099	.030		
5.0	.199	.101	.029	.195	.100	.029	.187	.098	.029	.180	.095	.028	.174	.093	.028		
6.0	.187	.094	.027	.184	.093	.027	.177	.091	.026	.171	.089	.026	.165	.087	.026		
7.0	.177	.087	.025	.173	.086	.025	.167	.085	.024	.162	.083	.024	.156	.081	.024		
8.0	.167	.081	.023	.164	.081	.023	.158	.079	.023	.153	.078	.022	.148	.076	.022		
9.0	.158	.076	.021	.155	.076	.021	.150	.074	.021	.146	.073	.021	.141	.072	.021		
10.0	.149	.072	.020	.147	.071	.020	.143	.070	.020	.139	.069	.020	.135	.068	.019		

ρcc	80%			70%			50%			30%			10%			0
ρw	50%	30%	10%	50%	30%	10%	50%	30%	10%	50%	30%	10%	50%	30%	10%	0
ρfc	20%			20%			20%			20%			20%			0
RCR	RCR:Room Cavity Ratio						Ceiling Cavity Exitance Coefficients(CCEC)									
0.0	.191	.191	.191	.163	.163	.163	.111	.111	.111	.064	.064	.064	.020	.020	.020	
1.0	.176	.157	.140	.151	.135	.121	.103	.093	.083	.059	.054	.048	.019	.017	.016	
2.0	.165	.133	.105	.142	.114	.091	.097	.079	.063	.056	.046	.037	.018	.015	.012	
3.0	.156	.114	.081	.134	.099	.070	.092	.069	.049	.053	.040	.029	.017	.013	.010	
4.0	.148	.101	.064	.127	.087	.056	.087	.061	.039	.051	.035	.023	.016	.012	.008	
5.0	.141	.090	.052	.121	.078	.045	.083	.054	.032	.048	.032	.019	.016	.010	.006	
6.0	.134	.081	.043	.115	.070	.038	.079	.049	.027	.046	.029	.016	.015	.009	.005	
7.0	.127	.074	.037	.110	.064	.032	.076	.045	.023	.044	.027	.013	.014	.009	.004	
8.0	.122	.068	.032	.105	.059	.028	.072	.042	.020	.042	.025	.012	.014	.008	.004	
9.0	.116	.063	.028	.100	.055	.024	.069	.039	.017	.040	.023	.010	.013	.007	.003	
10.0	.111	.059	.024	.096	.051	.021	.066	.036	.015	.039	.021	.009	.013	.007	.003	

C Range: 0 - 360DEG  
 C Interval: 22.5DEG  
 Test Speed: HIGH  
 Temperature: 25.3DEG  
 Operators: Oliver  
 Test Date: 2017-05-31

γ Range: 0 - 180DEG  
 γ Interval: 1.0DEG  
 Test System: EVERFINE GO-R5000\_V2 SYSTEM V2.0.366  
 Humidity: 65.0%  
 Test Distance: 2.477m [K=1.0000]  
 Remarks:

UGR(Unified Glare Rating) Table

ceiling/cavity	0.7	0.7	0.5	0.5	0.3	0.7	0.7	0.5	0.5	0.3
walls	0.5	0.3	0.5	0.3	0.3	0.5	0.3	0.5	0.3	0.3
working plane	0.2	0.2	0.2	0.2	0.2	0.2	0.2	0.2	0.2	0.2
Room dimensions	Viewed crosswise					Viewed endwise				
x = 2H y = 2H	18.0	19.3	18.2	19.5	19.7	20.1	21.4	20.3	21.6	21.7
3H	18.5	19.7	18.7	19.9	20.1	20.9	22.1	21.2	22.3	22.6
4H	18.6	19.8	18.9	20.0	20.2	21.2	22.3	21.5	22.6	22.8
6H	18.7	19.8	19.0	20.0	20.3	21.3	22.4	21.6	22.6	22.9
8H	18.7	19.7	19.0	20.0	20.3	21.3	22.3	21.6	22.6	22.9
12H	18.7	19.6	19.0	19.9	20.2	21.3	22.3	21.6	22.5	22.8
4H 2H	18.4	19.5	18.7	19.8	20.0	20.2	21.3	20.5	21.5	21.8
3H	19.0	20.0	19.4	20.3	20.6	21.2	22.2	21.5	22.5	22.8
4H	19.3	20.2	19.6	20.5	20.8	21.6	22.5	22.0	22.8	23.1
6H	19.4	20.2	19.8	20.5	20.9	21.8	22.6	22.2	22.9	23.3
8H	19.4	20.1	19.8	20.5	20.9	21.8	22.5	22.2	22.9	23.3
12H	19.4	20.1	19.8	20.4	20.8	21.8	22.4	22.2	22.8	23.2
8H 4H	19.4	20.1	19.8	20.5	20.9	21.6	22.3	22.0	22.7	23.1
6H	19.6	20.2	20.1	20.6	21.0	21.9	22.5	22.3	22.9	23.3
8H	19.7	20.2	20.1	20.6	21.1	21.9	22.4	22.4	22.9	23.3
12H	19.7	20.1	20.1	20.6	21.0	21.9	22.4	22.4	22.8	23.3
12H 4H	19.4	20.1	19.8	20.5	20.9	21.6	22.2	22.0	22.6	23.0
6H	19.6	20.2	20.1	20.6	21.0	21.8	22.4	22.3	22.8	23.2
8H	19.7	20.1	20.2	20.6	21.1	21.9	22.4	22.4	22.8	23.3
Variations with the observer position at spacings:										
S = 1.0H	+ 0.7 / - 0.9					+ 0.4 / - 0.5				
1.5H	+ 0.5 / - 0.6					+ 0.2 / - 0.4				
2.0H	+ 1.1 / - 1.1					+ 0.9 / - 0.9				

CIE Pub.117, 232.5 lm Total Lamp Luminous Flux Correct ( $8\log(F/F_0) = -5.1$ )

C Range: 0 - 360DEG  
 C Interval: 22.5DEG  
 Test Speed: HIGH  
 Temperature: 25.3DEG  
 Operators: Oliver  
 Test Date: 2017-05-31

γ Range: 0 - 180DEG  
 γ Interval: 1.0DEG  
 Test System: EVERFINE GO-R5000\_V2 SYSTEM V2.0.366  
 Humidity: 65.0%  
 Test Distance: 2.477m [K=1.0000]  
 Remarks:

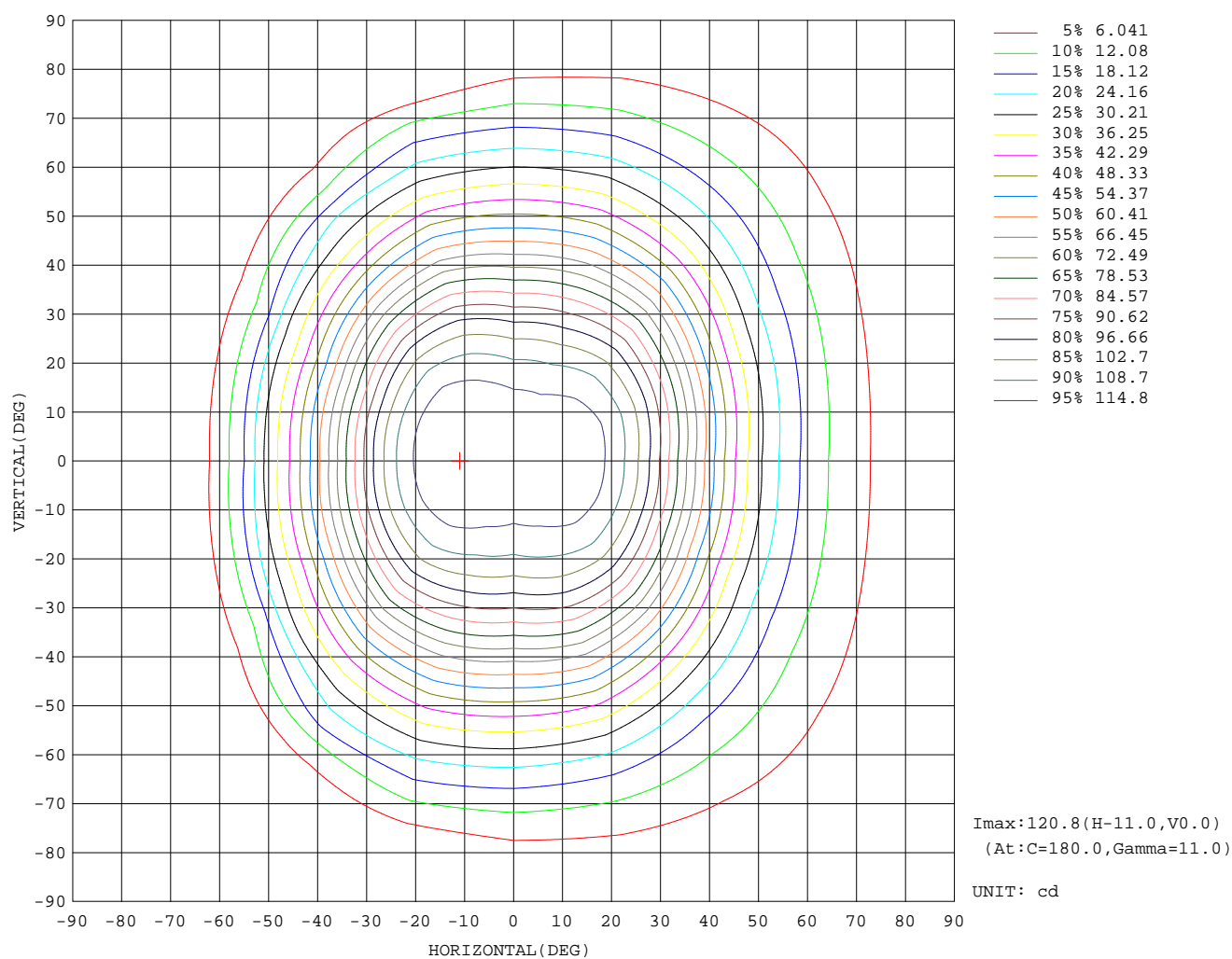
## UTILIZATION FACTORS TABLE

REFLECTANCE										
Ceiling	0.8	0.8	0.8	0.7	0.7	0.7	0.5	0.5	0.5	0
Walls	0.7	0.5	0.3	0.7	0.5	0.3	0.7	0.5	0.3	0
Working plane	0.2	0.2	0.2	0.2	0.2	0.2	0.2	0.2	0.2	0
ROOM INDEX	UTILIZATION FACTORS(PERCENT) $k(RI) \times RCR = 5$									
k = 0.60	67	57	51	67	57	51	65	57	51	46
0.80	77	67	61	76	67	61	75	66	61	55
1.00	85	76	70	84	75	70	82	76	69	63
1.25	91	83	77	90	82	77	88	81	76	70
1.50	96	88	82	94	87	82	91	85	81	75
2.00	101	94	89	99	93	89	96	91	87	80
2.50	104	98	93	102	97	92	99	94	90	83
3.00	107	101	97	105	100	96	101	97	94	86
4.00	110	105	102	107	104	100	103	100	98	90
5.00	111	108	105	109	106	103	105	102	100	92
ROOM INDEX	UF(total)									Direct
According to DIN EN 13032-2 2004				Suspended				SHRNOM = 1.25		

C Range: 0 - 360DEG  
 C Interval: 22.5DEG  
 Test Speed: HIGH  
 Temperature: 25.3DEG  
 Operators: Oliver  
 Test Date: 2017-05-31

γ Range: 0 - 180DEG  
 γ Interval: 1.0DEG  
 Test System: EVERFINE GO-R5000\_V2 SYSTEM V2.0.366  
 Humidity: 65.0%  
 Test Distance: 2.477m [K=1.0000]  
 Remarks:

## ISOCANDELA DIAGRAM

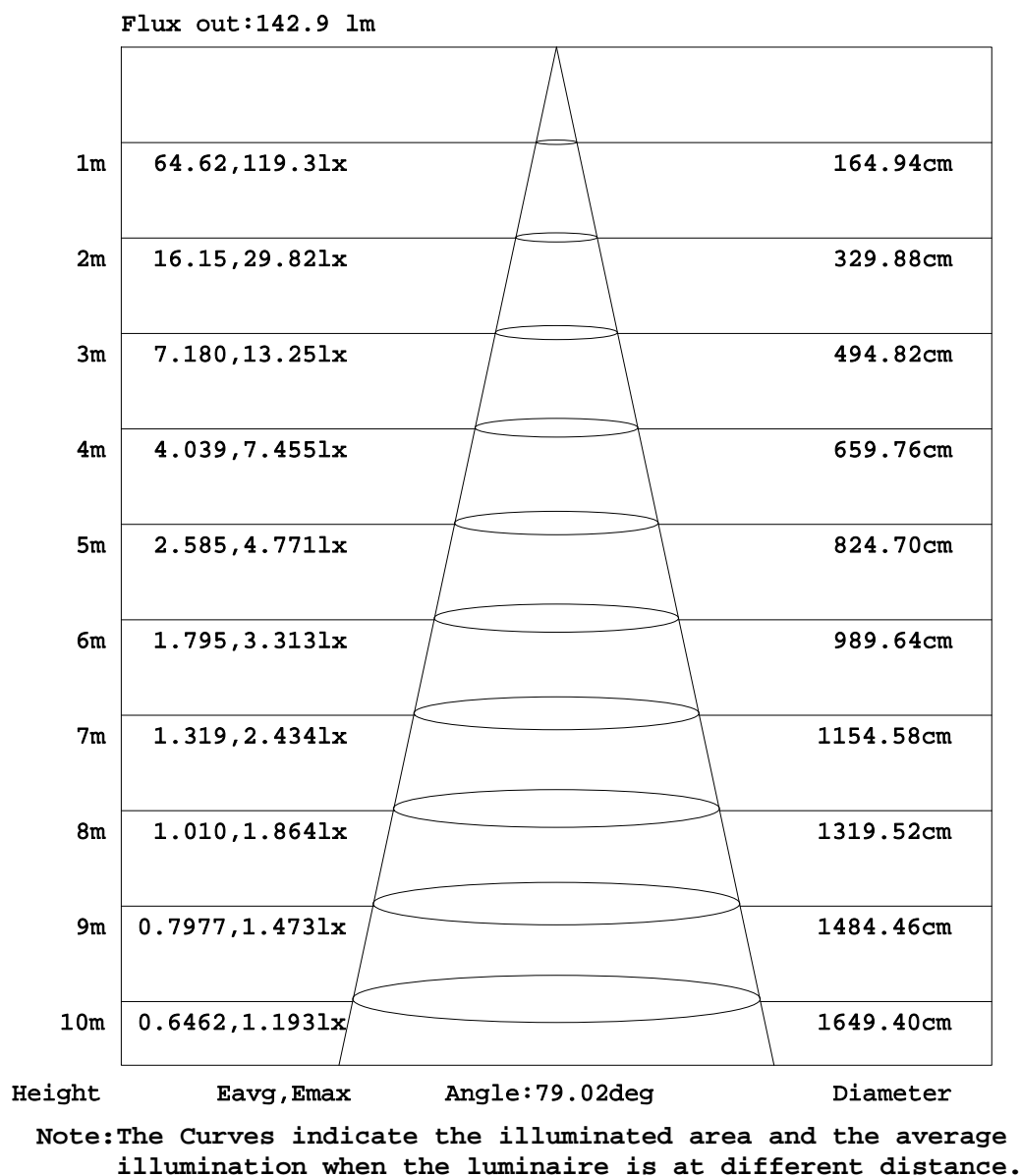


C Range: 0 - 360DEG  
C Interval: 22.5DEG  
Test Speed: HIGH  
Temperature:25.3DEG  
Operators:Oliver  
Test Date:2017-05-31

$\gamma$  Range: 0 - 180DEG  
 $\gamma$  Interval: 1.0DEG  
Test System:EVERFINE GO-R5000\_V2 SYSTEM V2.0.366  
Humidity:65.0%  
Test Distance:2.477m [K=1.0000]  
Remarks:



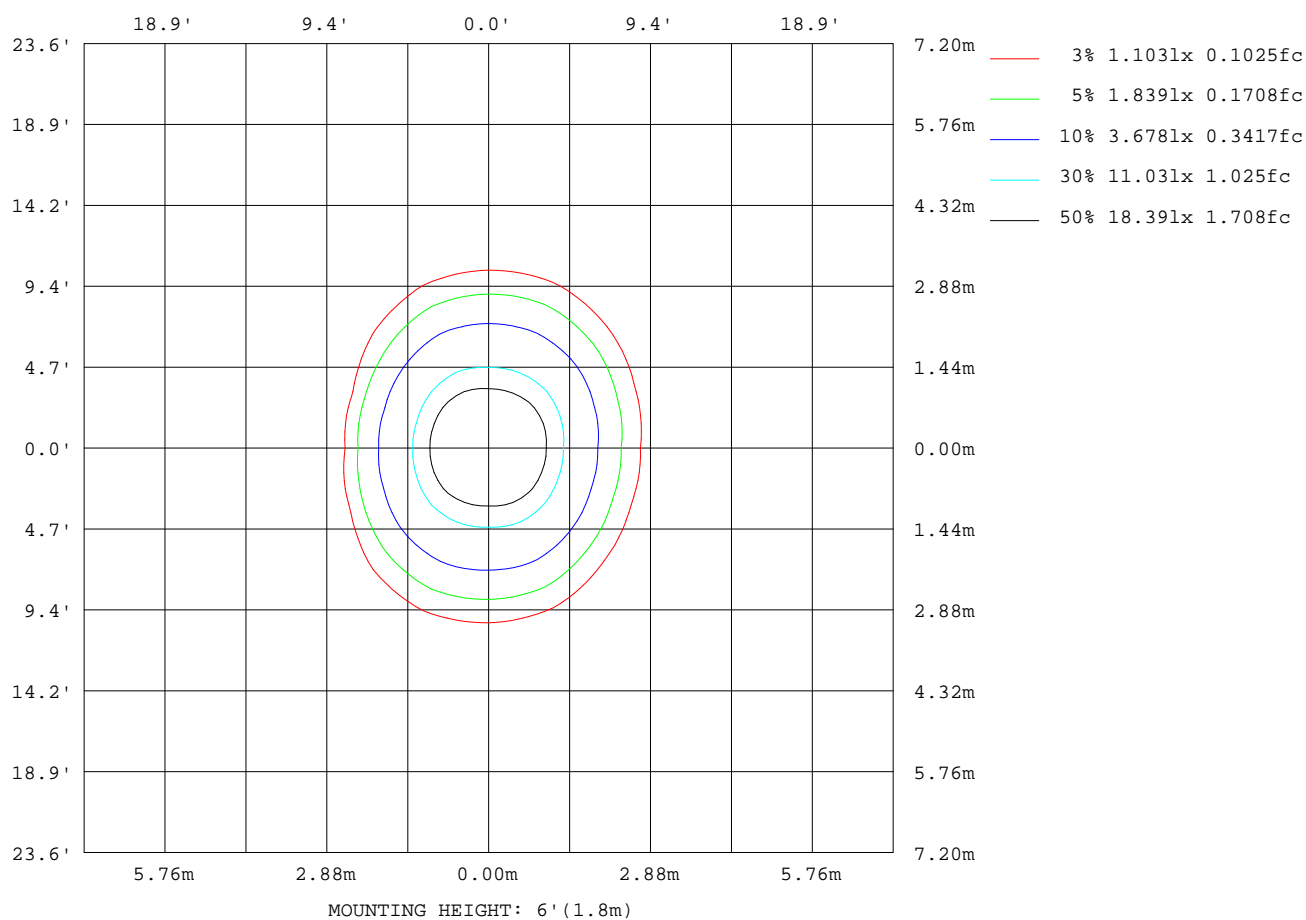
AAI Figure



C Range: 0 - 360DEG  
 C Interval: 22.5DEG  
 Test Speed: HIGH  
 Temperature: 25.3DEG  
 Operators: Oliver  
 Test Date: 2017-05-31

$\gamma$  Range: 0 - 180DEG  
 $\gamma$  Interval: 1.0DEG  
 Test System: EVERFINE GO-R5000\_V2 SYSTEM V2.0.366  
 Humidity: 65.0%  
 Test Distance: 2.477m [K=1.0000]  
 Remarks:

## ISOLUX DIAGRAM



C Range: 0 - 360DEG  
 C Interval: 22.5DEG  
 Test Speed: HIGH  
 Temperature: 25.3DEG  
 Operators: Oliver  
 Test Date: 2017-05-31

γ Range: 0 - 180DEG  
 γ Interval: 1.0DEG  
 Test System: EVERFINE GO-R5000\_V2 SYSTEM V2.0.366  
 Humidity: 65.0%  
 Test Distance: 2.477m [K=1.0000]  
 Remarks:

## LED Avg.L Report

Test:U:120.08V I:0.0680A P:5.8200W PF:0.7030 Freq:60.00Hz Lamp Flux:232.524x1 lm		
NAME: 5121-30-4W	TYPE:mimi flood	WEIGHT:
SPEC.:	DIM.:	SERIAL No.:
MFR.: WAC Lighting	SUR.:	Shielding Angle:

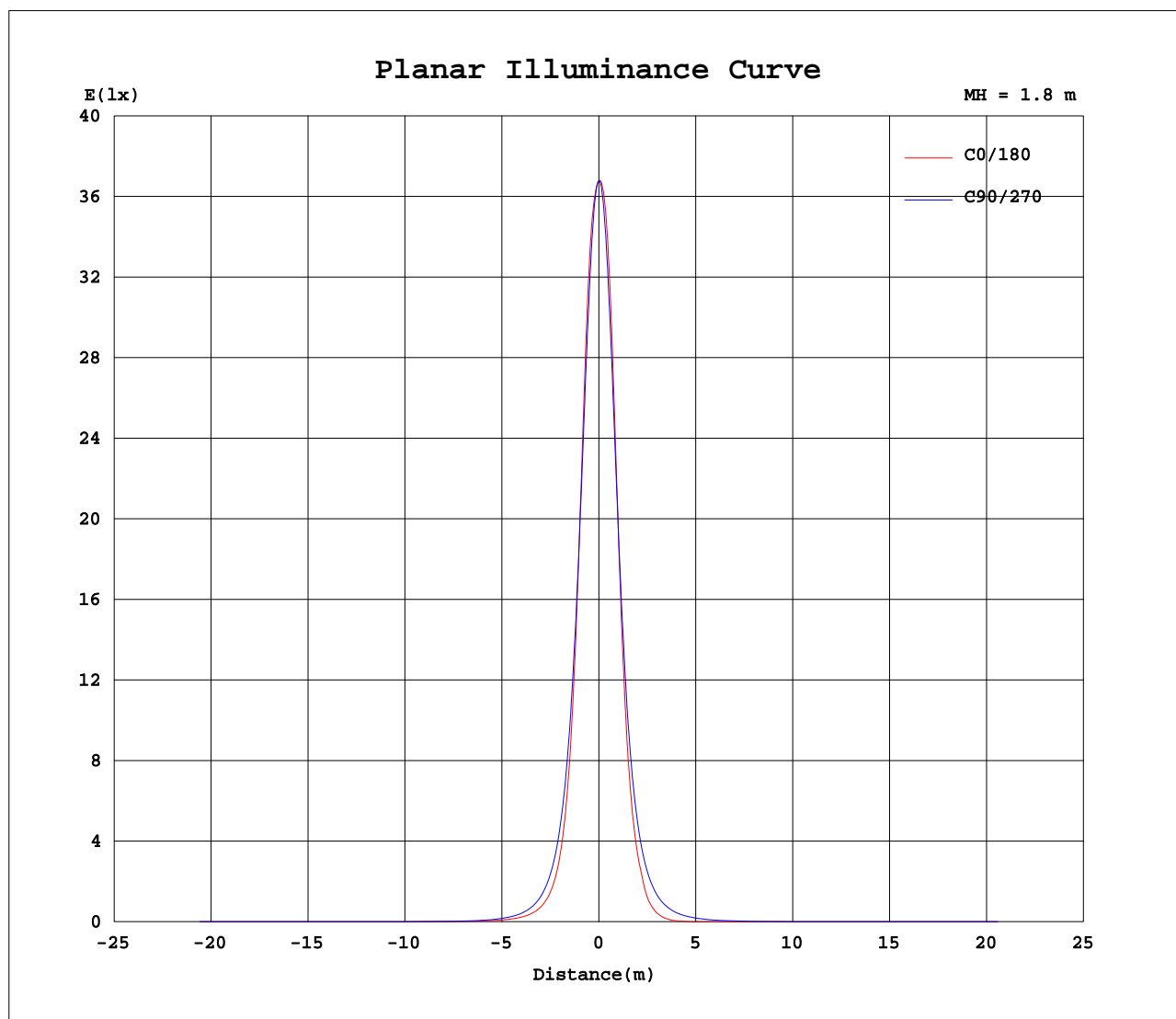
AvgL	cd/m2
L_0~180(65)av	567
L_0~180(75)av	311
L_0~180(85)av	138
L_90~270(65)av	1704
L_90~270(75)av	1172
L_90~270(85)av	177
L_45(65)av	1100
L_45(75)av	482
L_45(85)av	209

Standard: GB/T 29293-2012

C Range: 0 - 360DEG  
 C Interval: 22.5DEG  
 Test Speed: HIGH  
 Temperature:25.3DEG  
 Operators:Oliver  
 Test Date:2017-05-31

γ Range: 0 - 180DEG  
 γ Interval: 1.0DEG  
 Test System:EVERFINE GO-R5000\_V2 SYSTEM V2.0.366  
 Humidity:65.0%  
 Test Distance:2.477m [K=1.0000]  
 Remarks:

## Planar Illuminance Curve



C Range: 0 - 360DEG  
C Interval: 22.5DEG  
Test Speed: HIGH  
Temperature: 25.3DEG  
Operators: Oliver  
Test Date: 2017-05-31

$\gamma$  Range: 0 - 180DEG  
 $\gamma$  Interval: 1.0DEG  
Test System: EVERFINE GO-R5000\_V2 SYSTEM V2.0.366  
Humidity: 65.0%  
Test Distance: 2.477m [K=1.0000]  
Remarks:

## LUMINOUS DISTRIBUTION INTENSITY DATA

Table--1

UNIT: cd

C(DEG) γ (DEG)	0	22.5	45	67.5	90	112.5	135	157.5	180	202.5	225	247.5	270	292.5	315	337.5			
0	119	119	119	119	119	119	119	119	119	119	119	119	119	119	119	119			
5	119	119	119	119	119	119	119	120	120	120	120	119	119	119	119	119			
10	119	119	118	117	117	117	119	120	121	121	120	118	117	117	118	119			
15	118	118	117	114	113	114	117	119	120	120	119	117	114	115	116	118			
20	113	113	113	110	108	110	113	115	115	116	116	113	110	110	113	114			
25	104	104	106	103	100	103	107	107	106	107	109	107	103	103	107	107			
30	89.9	91.2	95.0	94.1	90.6	93.6	97.3	94.6	92.2	94.2	98.8	98.0	93.4	94.6	97.7	94.9			
35	73.4	75.3	81.5	83.1	79.9	82.8	84.9	79.2	75.5	78.0	85.2	87.1	82.8	84.2	85.8	80.0			
40	57.2	59.1	66.6	70.8	68.6	71.1	70.9	63.0	58.9	61.4	69.7	74.5	71.4	72.6	72.2	64.2			
45	42.9	44.6	52.1	58.3	57.3	59.3	56.7	48.0	44.2	46.4	54.6	61.6	60.0	60.8	58.2	49.3			
50	31.5	32.8	39.4	46.4	46.7	48.0	43.7	35.3	32.1	33.9	41.2	49.3	49.2	49.6	45.2	36.8			
55	22.8	23.8	29.0	35.8	36.9	37.7	32.8	24.0	18.0	20.7	30.1	38.2	39.2	39.2	34.1	26.7			
60	16.3	17.0	20.9	26.8	28.2	28.6	23.7	12.0	8.99	10.5	20.0	28.7	30.3	30.1	25.0	19.2			
65	11.5	11.9	14.7	19.2	20.7	20.7	13.7	5.00	2.92	3.93	9.51	20.7	22.5	22.2	17.9	13.7			
70	7.71	8.01	9.85	13.0	14.2	13.3	5.46	0.82	0.12	0.46	3.41	12.9	15.8	15.6	12.3	9.29			
75	4.83	5.00	6.09	7.98	8.55	6.30	0.92	0.00	0.00	0.00	0.13	4.60	9.65	9.95	7.83	5.84			
80	2.46	2.51	3.04	3.99	3.76	1.10	0.00	0.00	0.00	0.00	0.00	0.62	4.13	5.22	4.15	3.08			
85	0.72	0.72	0.82	0.95	0.47	0.00	0.00	0.00	0.00	0.00	0.00	0.00	0.46	1.56	1.37	1.00			
90	0.07	0.07	0.05	0.01	0.00	0.00	0.00	0.00	0.00	0.00	0.00	0.00	0.00	0.01	0.04	0.06			
95	0.04	0.04	0.01	0.00	0.00	0.00	0.00	0.00	0.00	0.00	0.00	0.00	0.00	0.00	0.01	0.03			
100	0.00	0.00	0.00	0.00	0.00	0.00	0.00	0.00	0.00	0.00	0.00	0.00	0.00	0.00	0.00	0.00			
105	0.00	0.00	0.00	0.00	0.00	0.00	0.00	0.00	0.00	0.00	0.00	0.00	0.00	0.00	0.00	0.00			
110	0.00	0.00	0.00	0.00	0.00	0.00	0.00	0.00	0.00	0.00	0.00	0.00	0.00	0.00	0.00	0.00			
115	0.00	0.00	0.00	0.00	0.00	0.00	0.00	0.00	0.00	0.00	0.00	0.00	0.00	0.00	0.00	0.00			
120	0.00	0.00	0.00	0.00	0.00	0.00	0.00	0.00	0.00	0.00	0.00	0.00	0.00	0.00	0.00	0.00			
125	0.00	0.00	0.00	0.00	0.01	0.00	0.00	0.00	0.01	0.01	0.01	0.01	0.01	0.01	0.01	0.01			
130	0.01	0.01	0.01	0.01	0.01	0.01	0.01	0.01	0.02	0.02	0.02	0.02	0.02	0.02	0.02	0.02			
135	0.02	0.02	0.02	0.02	0.02	0.02	0.02	0.02	0.04	0.04	0.04	0.04	0.04	0.04	0.04	0.04			
140	0.03	0.03	0.03	0.03	0.03	0.03	0.03	0.03	0.05	0.05	0.05	0.05	0.05	0.05	0.05	0.05			
145	0.04	0.04	0.04	0.04	0.03	0.04	0.04	0.04	0.07	0.07	0.06	0.06	0.06	0.06	0.06	0.07			
150	0.05	0.05	0.05	0.04	0.04	0.04	0.05	0.05	0.08	0.08	0.08	0.07	0.07	0.07	0.07	0.08			
155	0.06	0.06	0.06	0.05	0.05	0.05	0.06	0.06	0.09	0.09	0.08	0.08	0.08	0.08	0.08	0.08			
160	0.07	0.07	0.06	0.06	0.06	0.06	0.06	0.07	0.09	0.09	0.09	0.09	0.08	0.08	0.08	0.09			
165	0.07	0.07	0.07	0.07	0.06	0.06	0.07	0.07	0.09	0.10	0.09	0.09	0.09	0.08	0.09	0.09			
170	0.08	0.08	0.08	0.08	0.07	0.07	0.08	0.08	0.10	0.10	0.10	0.10	0.09	0.09	0.09	0.09			
175	0.09	0.09	0.09	0.09	0.08	0.08	0.09	0.09	0.10	0.10	0.10	0.10	0.09	0.09	0.09	0.09			
180	0.10	0.10	0.09	0.09	0.09	0.09	0.09	0.10	0.10	0.10	0.10	0.09	0.09	0.09	0.09	0.09			

C Range: 0 - 360DEG  
 C Interval: 22.5DEG  
 Test Speed: HIGH  
 Temperature: 25.3DEG  
 Operators: Oliver  
 Test Date: 2017-05-31

γ Range: 0 - 180DEG  
 γ Interval: 1.0DEG  
 Test System: EVERFINE GO-R5000\_V2 SYSTEM V2.0.366  
 Humidity: 65.0%  
 Test Distance: 2.477m [K=1.0000]  
 Remarks: